

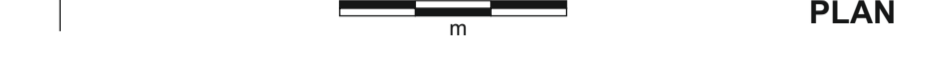
Site 3234: Cueva-Cubio del Llanio (Cold Store Cave)

Riacho 30T 451621 4800988 Altitude 163m Length 3831m Vertical Range +32 -45m
 Surveyed during 2009 - 2013 using tape/Disto, compass and clino or DistoX as detailed below. Survey intended to be BCRA 5c or better but there are doubts about the reliability and consistency of the DistoX.

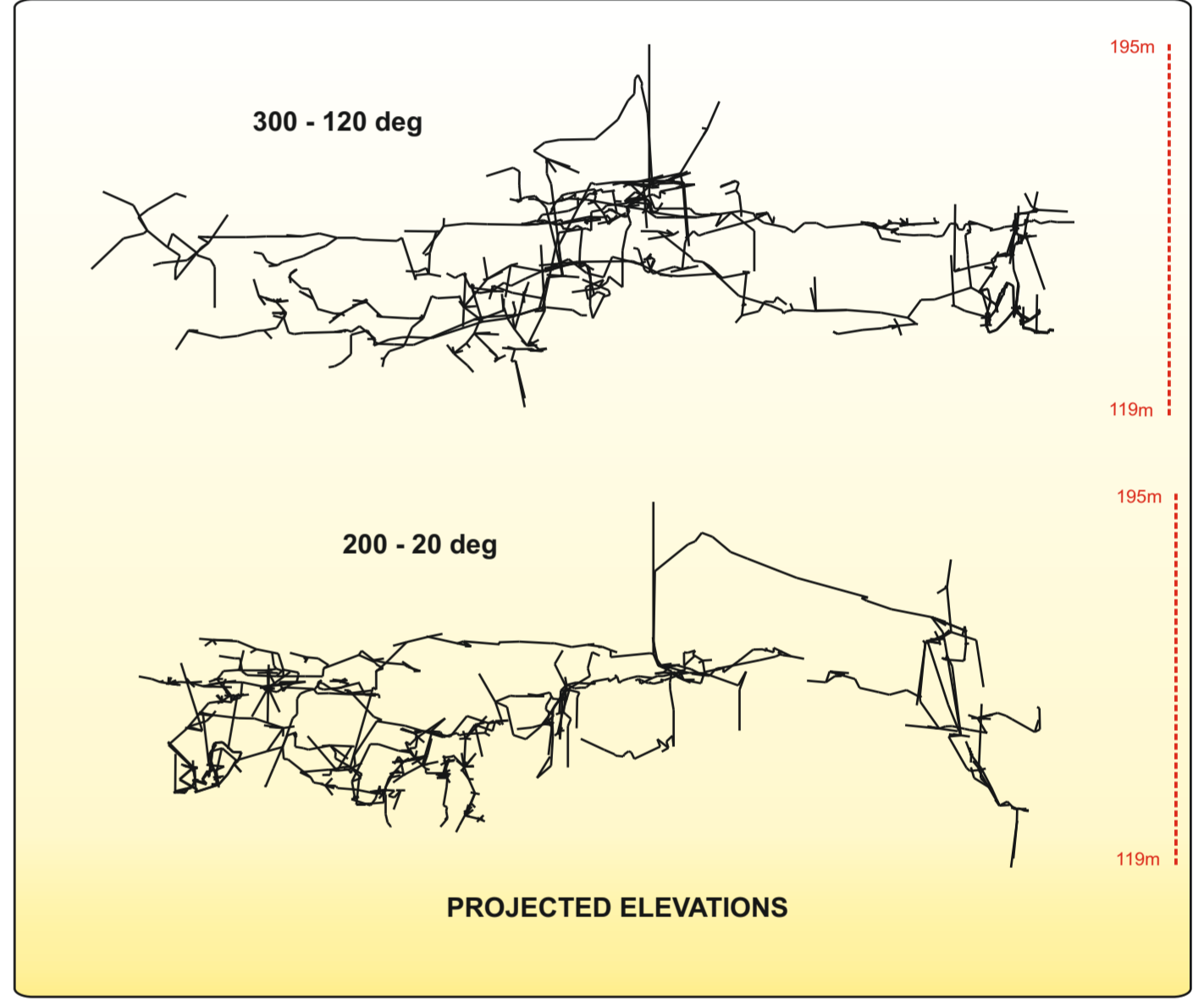
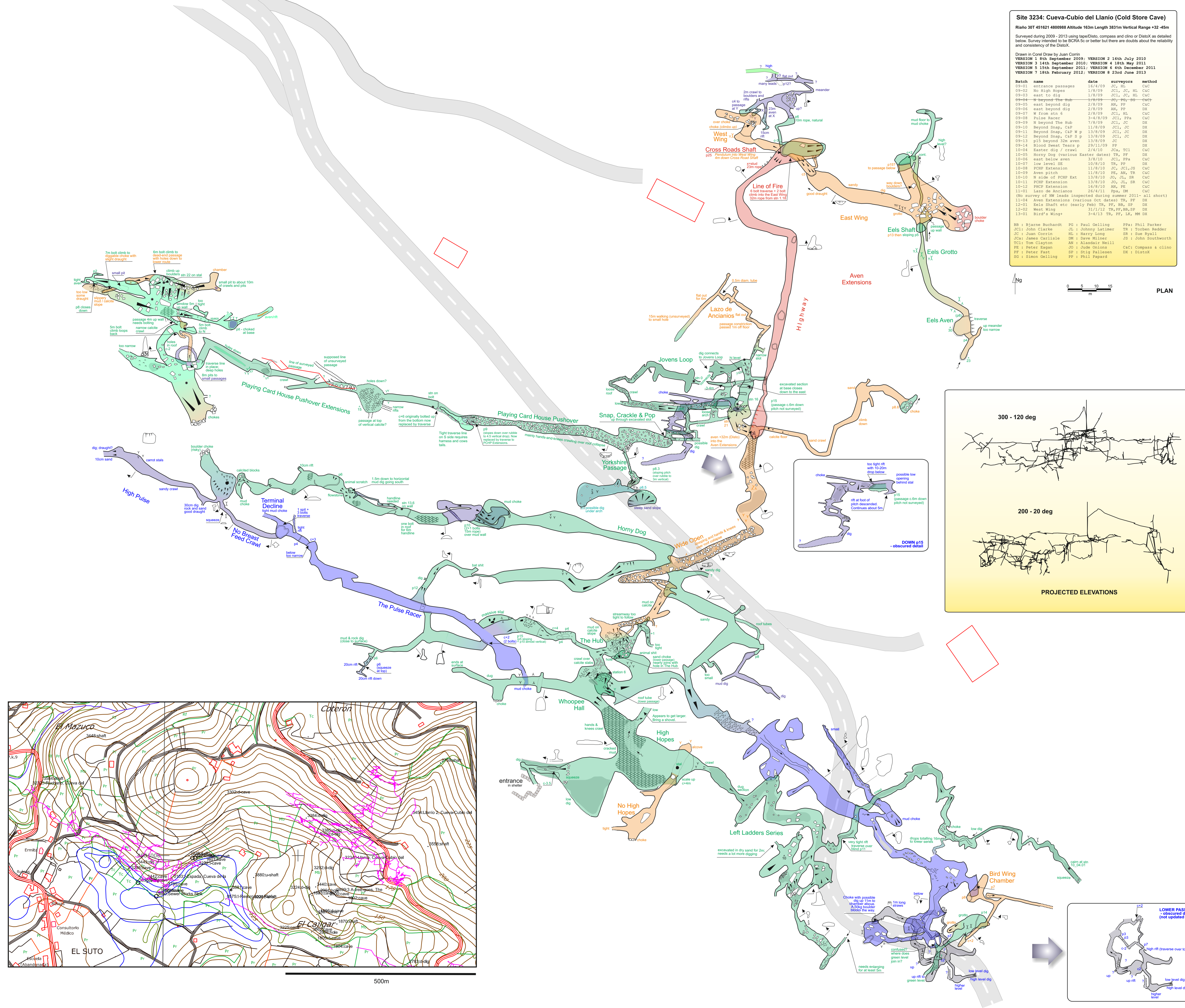
Drawn in Core Draw by Juan Corrin
 VERSION 1 8th September 2009; VERSION 2 16th July 2010
 VERSION 3 14th September 2010; VERSION 4 18th May 2011
 VERSION 5 15th September 2011; VERSION 6 4th December 2011
 VERSION 7 18th February 2012; VERSION 8 23rd June 2013

Batch name	date	surveyors	method
09-01	entrance passages	16/8/09 JCI, HL	C&C
09-02	No High Hopes	1/8/09 JCI, JCI, HL	C&C
09-03	east to dig	1/8/09 JCI, JCI, HL	C&C
09-04	W beyond The Hub	2/8/09 AN, PP	DX
09-05	east beyond dig	2/8/09 AN, PP	DX
09-06	east beyond dig	2/8/09 AN, PP	DX
09-07	W from str 6	2/8/09 JCI, HL	C&C
09-08	Pulse Racer	3-4/8/09 JCI, PPA	C&C
09-09	N beyond The Hub	7/8/09 JCI, JCI	DX
09-10	Beyond Snap, CAP	11/8/09 JCI, JCI	DX
09-11	Beyond Snap, CAP W p	13/8/09 JCI, JCI	DX
09-12	Beyond Snap, CAP S p	13/8/09 JCI, JCI	DX
09-13	p15 beyond 32a aven	13/8/09 JCI	DX
09-14	Blood Sweat Tears p	29/11/09 PP	DX
10-04	Easter dig / crawl	2/4/10 JCA, TCI	C&C
10-05	Horny Dog (various Easter dates)	TR, PP	DX
10-06	east below aven	3/8/10 JCI, PPA	C&C
10-07	low level SE	10/8/10 TR, PP	DX
10-08	PCHP Extension	11/8/10 JCI, JCI, JS	C&C
10-09	Aven pitch	11/8/10 PE, AN, TR	C&C
10-10	N side of PCHP Ext	13/8/10 JO, JL, SR	C&C
10-11	PCHP Extension	13/8/10 JO, JL, SR	C&C
10-12	PCHP Extension	16/8/10 AN, PE	C&C
11-01	Lazo de Ancianos	26/4/11 PPA, DM	C&C
(No survey of NW Leads inspected during summer 2011 - all short)			
11-04	Aven Extension (various Oct dates)	TR, PP	DX
12-01	Eels Shaft etc (early Feb)	TR, PP, BB, SP	DX
12-02	West Wing	31/1/12 TR, PP, BB, SP	DX
13-01	Bird's Wings	3-4/13 TR, PP, LK, WM	DX

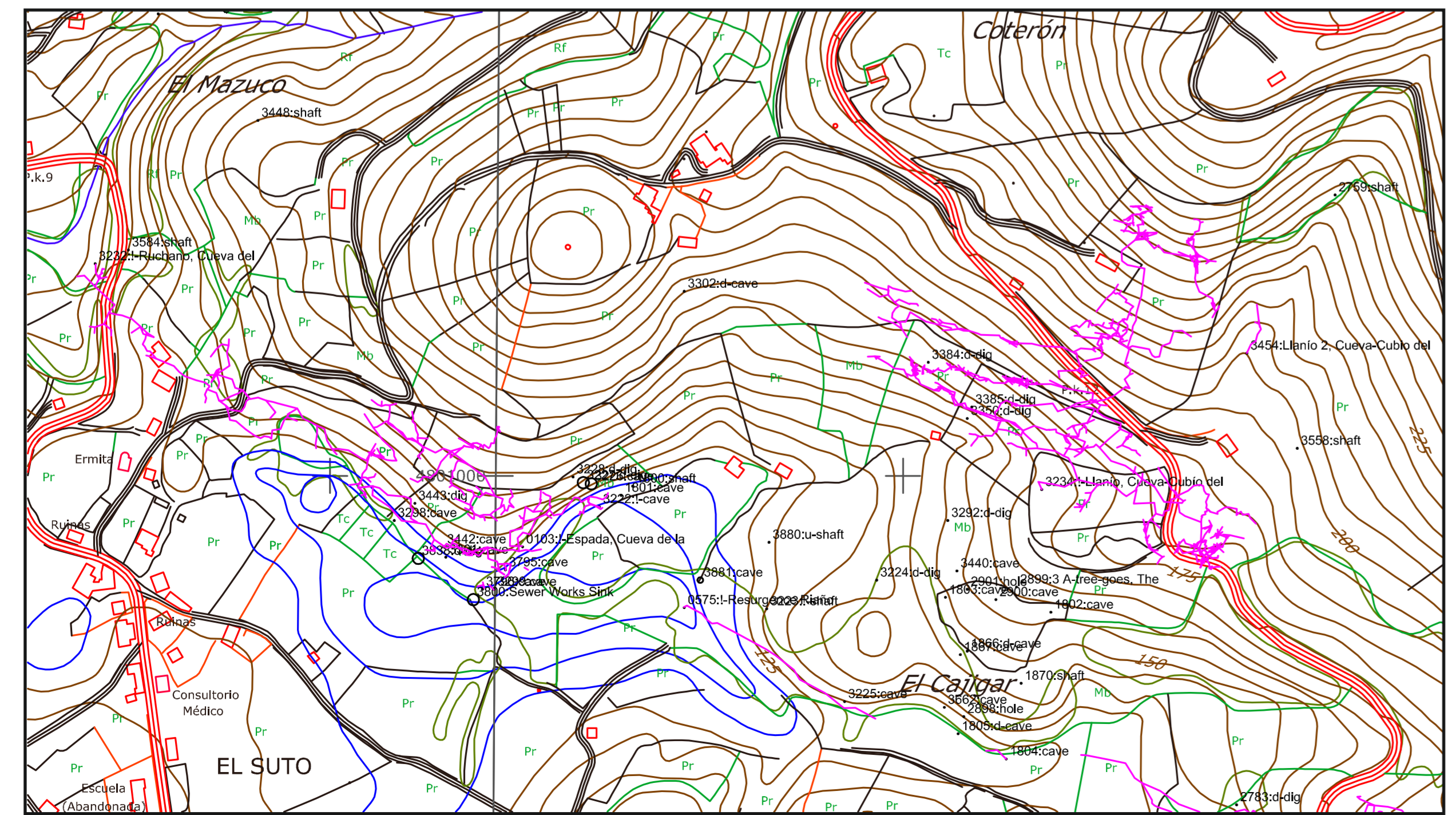
BB : Bjørne Buchardt PG : Paul Gelling PPA: Phil Parker
 JCI: John Clarke JL: Johnny Larimer TR : Torben Redder
 JC : Juan Corrin HL : Harry Long SR : Sue Ryall
 JCA: James Carlisle DM : Dave Milner JS : John Southworth
 TCI: Tom Clayton AN : Alasdair Neilill
 PE : Peter Egan JO : Jude Onions C&C: Compass & Clino
 PP : Peter Fast SP : Stig Pallelsen DX : DistoX
 SO : Simon Gelling PP : Phil Peppers



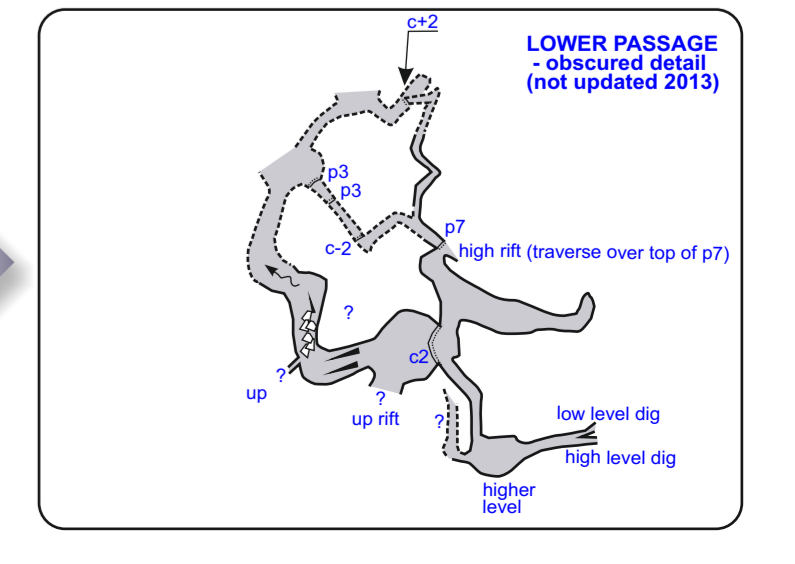
PLAN



PROJECTED ELEVATIONS



500m



LOWER PASSAGE - obscured detail (not updated 2013)