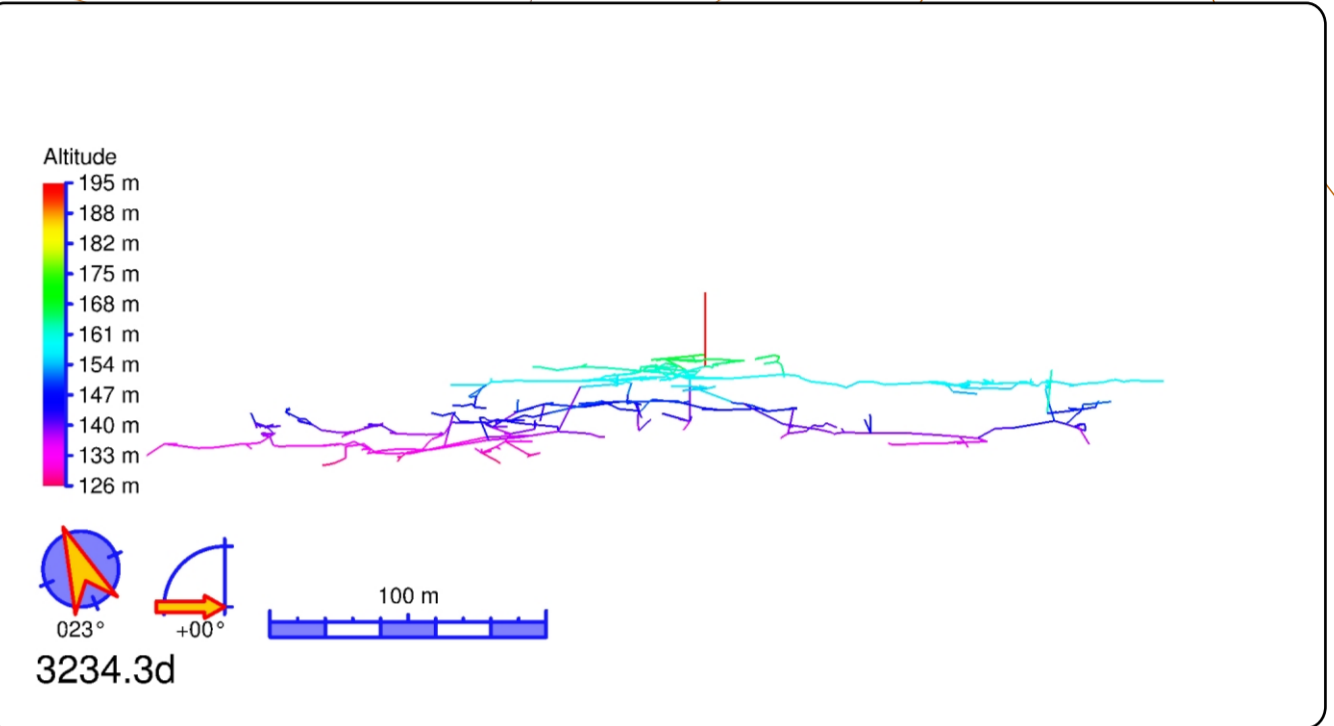


Mb

Pr

Pr



Site 3234: Cueva-Cubío del Llanío (Cold Store Cave)
 Ríoño 30T 451621 4800988 Altitude 163m Length 2314m Vertical Range +32 -37m

Surveyed during 2009, 2010 using tape/Disto, compass and clinometer or DistoX as detailed below. Survey intended to be BCRA 5c or better but there are doubts about the reliability and consistency of the DistoX.

Drawn in Coral Draw by Juan Corrin

VERSION 1 8th September 2009; VERSION 2 16th July 2010

Batch	name	date	surveyors	method
09-01	entrance passages	16/4/09	JC, HL	C&C
09-02	No High Hopes	1/8/09	JC1, JC, HL	C&C
09-03	east to dig	1/8/09	JC1, JC, HL	C&C
09-04	N beyond The Hub	1/8/09	JC, PG, SG	C&C
09-05	east beyond dig	2/8/09	AN, PP	C&C
09-06	east beyond dig	2/8/09	AN, PP	DX
09-07	W from stn 6	2/8/09	JC1, HL	C&C
09-08	Pulse Racer	3-4/8/09	JC1, PPa	C&C
09-09	N beyond The Hub	7/8/09	JC1, JC	DX
09-10	Beyond Snap, C&P	11/8/09	JC1, JC	DX
09-11	Beyond Snap, C&P W p	13/8/09	JC1, JC	DX
09-12	Beyond Snap, C&P S p	13/8/09	JC1, JC	DX
09-13	p15 beyond 32m aven	13/8/09	JC	DX
09-14	Blood Sweat Tears p	29/11/09	PP	DX
10-04	Easter dig / crawl	2/4/10	JCa, TCl	C&C
10-05	Horny Dog (various Easter dates)		TR, PF	DX

JC1: John Clarke HL: Harry Long C&C: Compass & clinometer
 JC: Juan Corrin AN: Alasdair Neill DX: DistoX
 JCa: James Carlisle PP: Phil Papard
 TCl: Tom Clayton PPa: Phil Parker
 PF: Peter Fast TR: Torben Redder
 PG: Paul Gelling
 SG: Simon Gelling

PLAN

150m

175m

