

MATIENZO CAVES PROJECT

LOGBOOK

Year: 2010

Season: February

Logbook pages scanned to jpg then combined into a pdf file using <http://smallpdf.com/>

Juan Corrin, January 2015

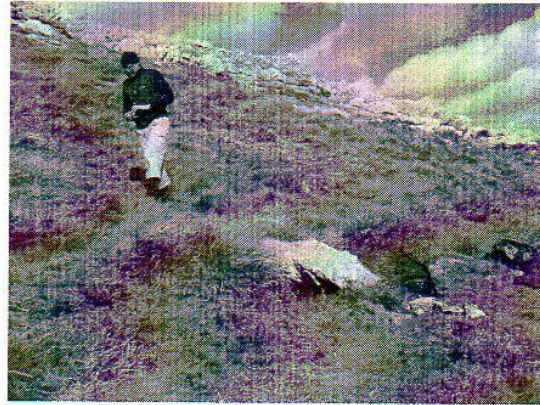
FEBRUARY 2010

Matienzo February 2010

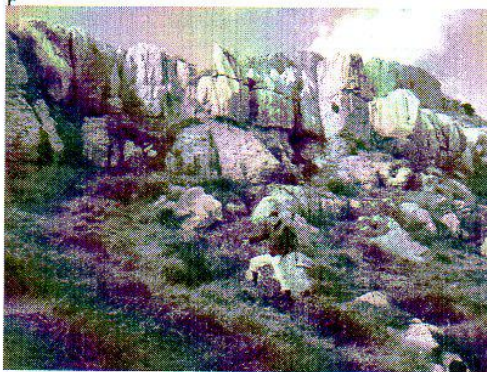
20/2/2010 – walk on Mullir – Pedro; Ian; Big Steve; Phil P

2820
~~3342~~

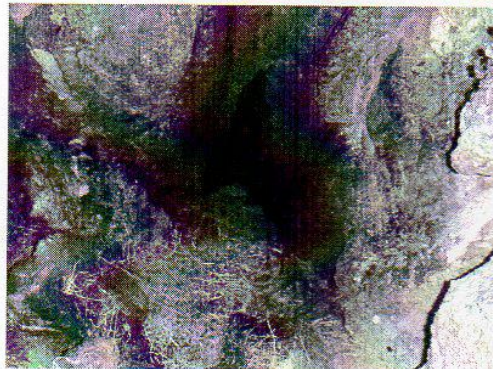
1. Shaft undescended – Alt 675m
0455601/4795428
Drop of a just over 1m to a sloping mud slope to drop where rocks bounce and fall for some seconds, prob some 10+m deep. Large rock blocks hole (next to red bag in pic) and will need removing using “caps” before access is possible.



2. Shaft, descended by Spaniards (old “M” number in Green pain on rock – not



3342



Alt 717 0455325/4795678.
Hole is not far from 134 and has a small Yew tree in entrance and seems to drop into large old cave with eroded calcite on walls, with further drop visible. From my map it seems not to be shown, but the path-away map would not load so I had to use my 2007 map on Memory map.

3. ^{Pic from Pete Smith} 134 – Shaft covered in boulders – GPS and Ent pic – Alt 712 0455346/4795675
Pedro has pic of entrance and will send it to you.



2

4. Flint nodules on Mullir near summit



21 February 2010

Page 1 of 1

From: phil.papard@hse.gsi.gov.uk

To: juancorrin@matienzo.org.uk; uzueka@aol.com

Subject: Two new? caves for list

Date: Sun, 21 Feb 2010 11:26

Attachments: Matienzo_February_2010.doc (334K)

Juan

Tried to send form my own PC - bounced back so trying form my works one!

Me and Steve spent Friday mending water pipes etc, rain most of day. Saturday was dry and sunny so we went for a walk (see attached) today Tablon seems to be on for me, Steve and Pedro. Footleg et al have been in Riaño and Uzueka surveying and tying in previous work, plus video etc. Some survey is new, but passages may have been looked at before.

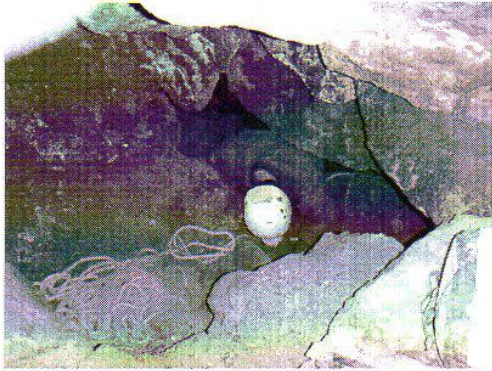
I had trouble getting my router to work with your new one, realised their addresses were the same! So we changed mine and all works well – not dropping out like at Christmas.

Phil

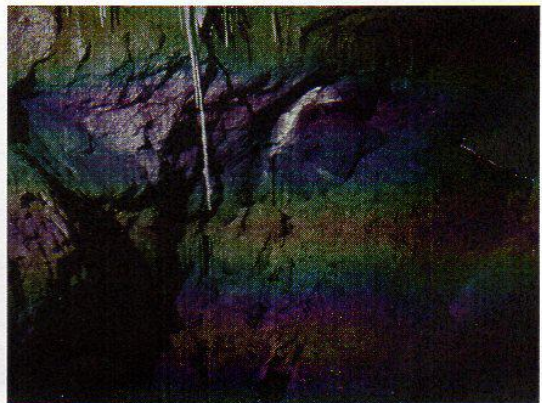
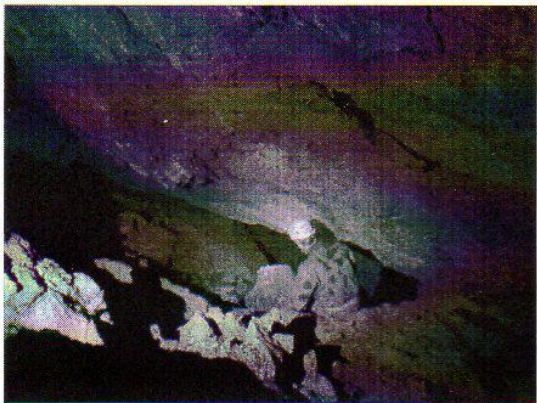
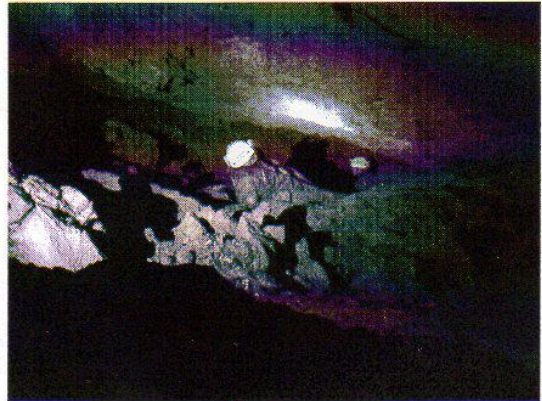
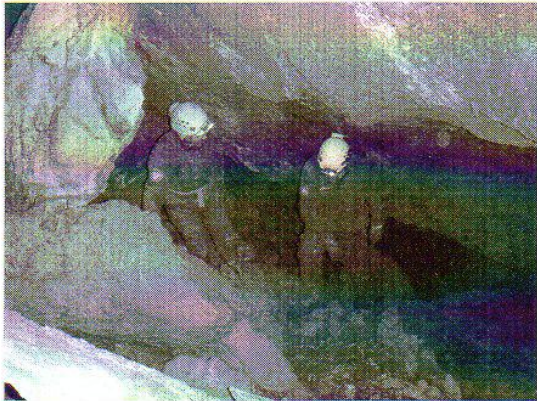
Matienzo February 2010

21/2/2010 – Tablon - Pedro; Big Steve; Phil P

Opened up shaft excavated in January by taking of projections using snappers, bottom is again on the fault, sloping down at some 45 deg to a boulder dig. After moving some boulders Big Steve squeezed through into a large sloping passage on the fault. At this point Pedro and Phil quickly joined Steve ready to run down the kilometres of passage that were certain to lay in wait. But Tablon kept up it reputation and after some 20m it hit a wall with some straws and a possible passage off to the right (west) but this closed



down. There is an excellent draught into this extension for the day (8 to 10 deg) but it was not good enough to identify where it goes, we think it is down under the "wall" to the continuation of the fault as in the first "chamber" at the bottom of the entrance rift. Extension not surveyed, prob adds some 30 to 40m and with the January extension it makes the cave some 15m deeper, maybe a little more. Only my surface camera so pics are not good!



m

26 February 2010

0105.svx attached

Page 1 of 1

Hi Juan,

Now I have merged all our new data into the Riaño master file (attached), I can confirm that in total we added 394m of new passage to the cave. New length is 9880m. All our survey in Uzueka was duplication of old data so we could resketch and extend it, but we never got a second trip in to extend beyond the known data. So that is all the new length for the 4 valleys from this trip.

Most of the new stuff was in the Riaño Entrance series. The rest was oxbows around the junction of Torno Inlet with the main streamway. You'll easily see the new stuff if you turn on passage walls as it now has LRUD data.

Footleg

MATIENZO CAVES PROJECT