

MATIENZO CAVES PROJECT

LOGBOOK

Year: 1997

Season: Christmas : New Year

Logbook pages scanned to jpg then combined into a pdf file using <http://smallpdf.com/>

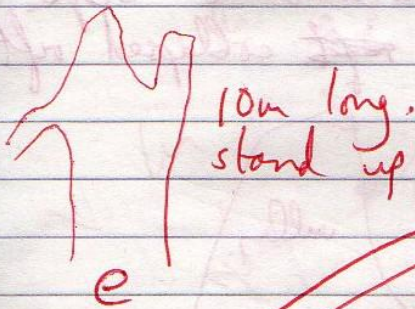
Juan Corrin, January 2015

XMAS

21/12/97.

Tom Kenny + Jen followed dotted line over ridge trying to stay with area.

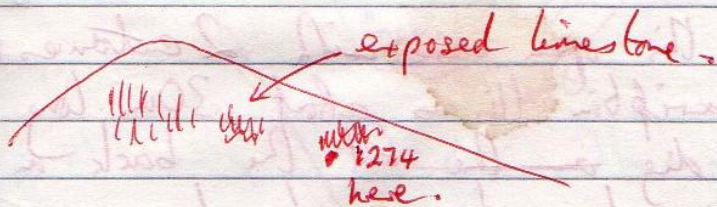
1273



modern pottery

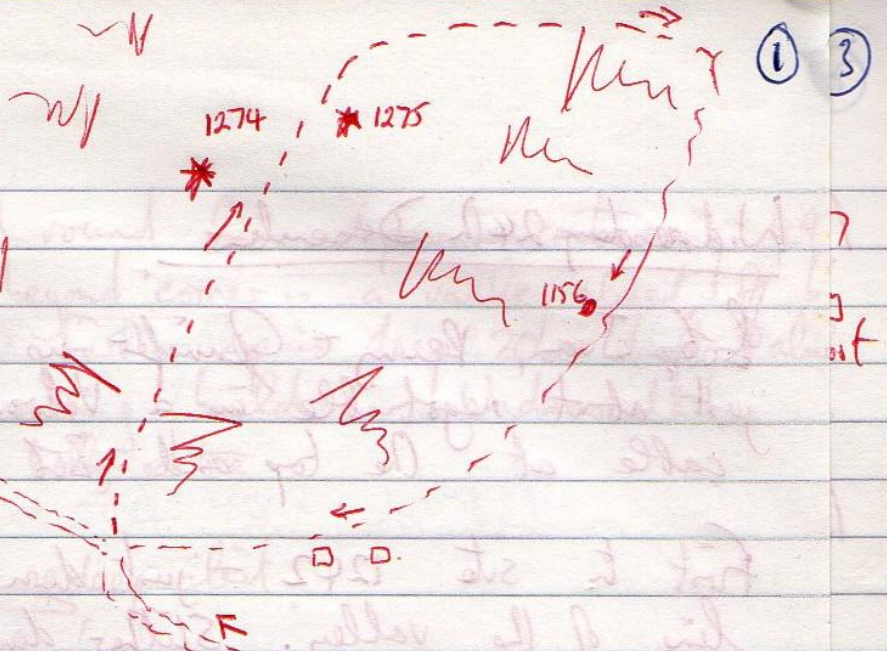
CALZADILLAS
↓
AZISAS.

1274 2 holes with trees about 12m deep. S hole may be a free climb. Looking back South the view is,



1275 10m deep undescended between fence and wet area.

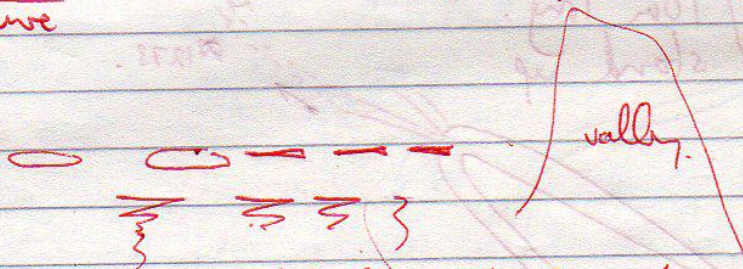
156 photo taken of 1156 entrance



Wednesday 24th December

Bob, Ivan, Penny & Jennifer up the TV mast track - now just about negotiable in a Volvo. Broke the handbrake cable at the top and Bob broke his helmet strap.

First to site 1242 - just down in woods before the line of the valley. Slithers down entrance slope to 2-3m climb down along ~~rift~~ collapsed rift / slip feature

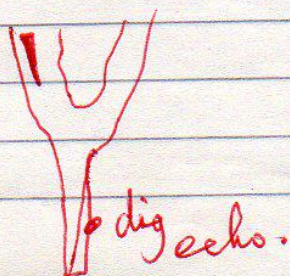


About 20m long in total and 9m deep. A similar looking feature is about 50m back ~~and~~ from valley and slightly lower. About 5m long.

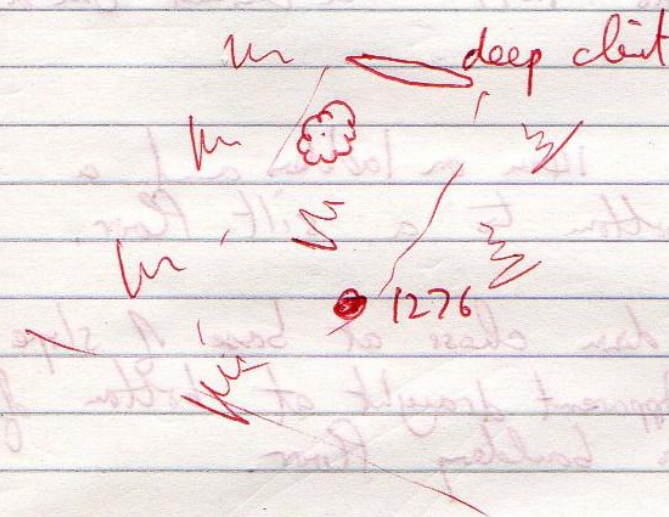
1246. Entrance has hazel near oak tree as described. Entrance slope ends at vertical loose 8m climb down which needs a ladder or some protection for heavier covers than Paul (?). No draught on a mild winter day.

497 Looked at this open cave with 2 entrances in depression. Despite the description this is about 30m long and has a possible dig ~~at the~~ at the back on the left where a good echo is heard.

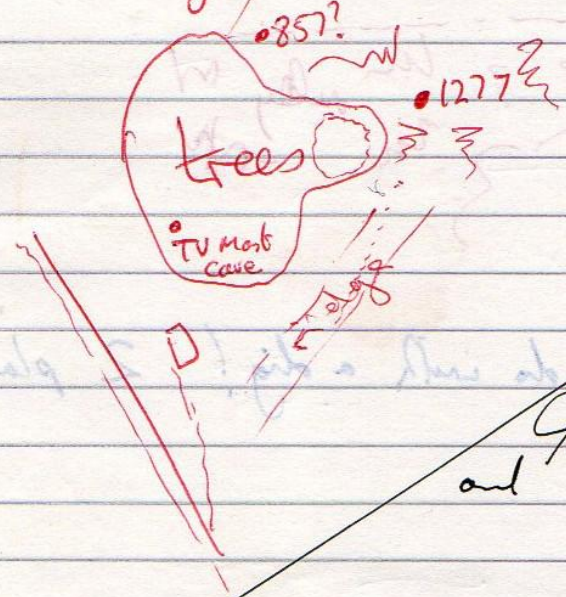
No draught



1276 Contoured round from depression containing 497 and just beyond corner is a valley closed off by deep clint. Further up is deep 20m shaft almost concealed by covering boulders. Underscended, 20m S of a holly-oak tree.



1277 10m deep open pitch with ^{hazel} tree growing out of it. Above wooded depression and on the nose of the ridge. Underscended.



Xmas Day

Bob, Lloyd, Jean +
Ginifer photos in Tris 2
and 1

Monday 29th December.

Pete, Ivan, Penny, Jerry + Carol up to TV mast area to redo last Wednesday's walk in reverse

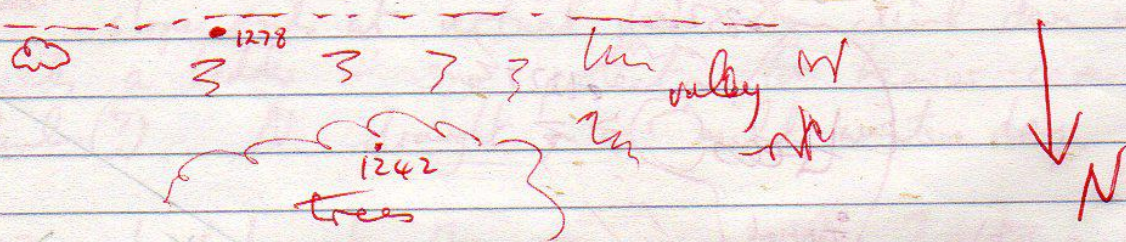
Pete free climbed down into 1277 - a chibed 8m deep hole.

Ivan descended 1276 14m on ladders and a further 2m drop at bottom to a silt floor.

Then to 1246 - a climb down choss at base of slope enters chossy area. Apparent draught at bottom of climb may disappear into bouldery floor.

On way back found shaft 1278 ~ 10m deep

Just below new fence 100m E of valley at 80m W of a couple of trees on same level.



772 on road could do with a dig! 2 places to go at.

Thursday 1st Jan

st
e
p

Pete, Penny, Jen + Carol. Walking up above house ^{was} to NE of
415 area. 2 shafts found - Pete sending 9ki.
Photos taken.

↑ 1279 1280

7

MATIENZO CAVES PROJECT