

**Site 3234: Cueva-Cubío del Llano (Cold Store Cave)**

Riño ETRS89: 30T 0451519 4800779 Altitude 165m  
Length 3531m Vertical Range +32 -45m

Surveyed during 2009 - 2013 using tape/Disto, compass and clinometer or DistoX as detailed below. Survey intended to be BCR/A or better but there are doubts about the reliability and consistency of the DistoX.  
Easter 2014 notes generally relate to the area SW of Bird's Wing Chamber when no survey was carried out (DistoX malfunction).

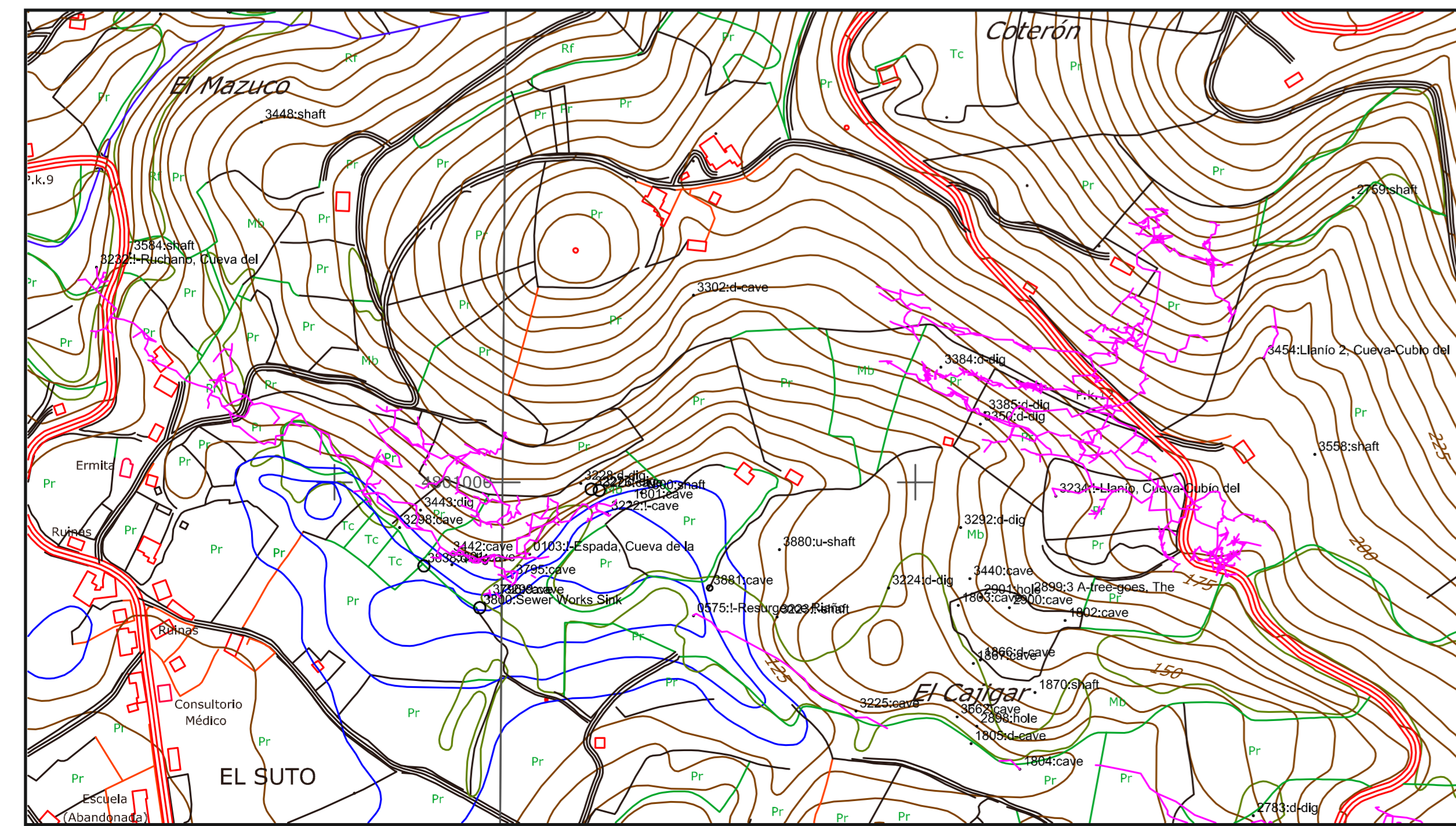
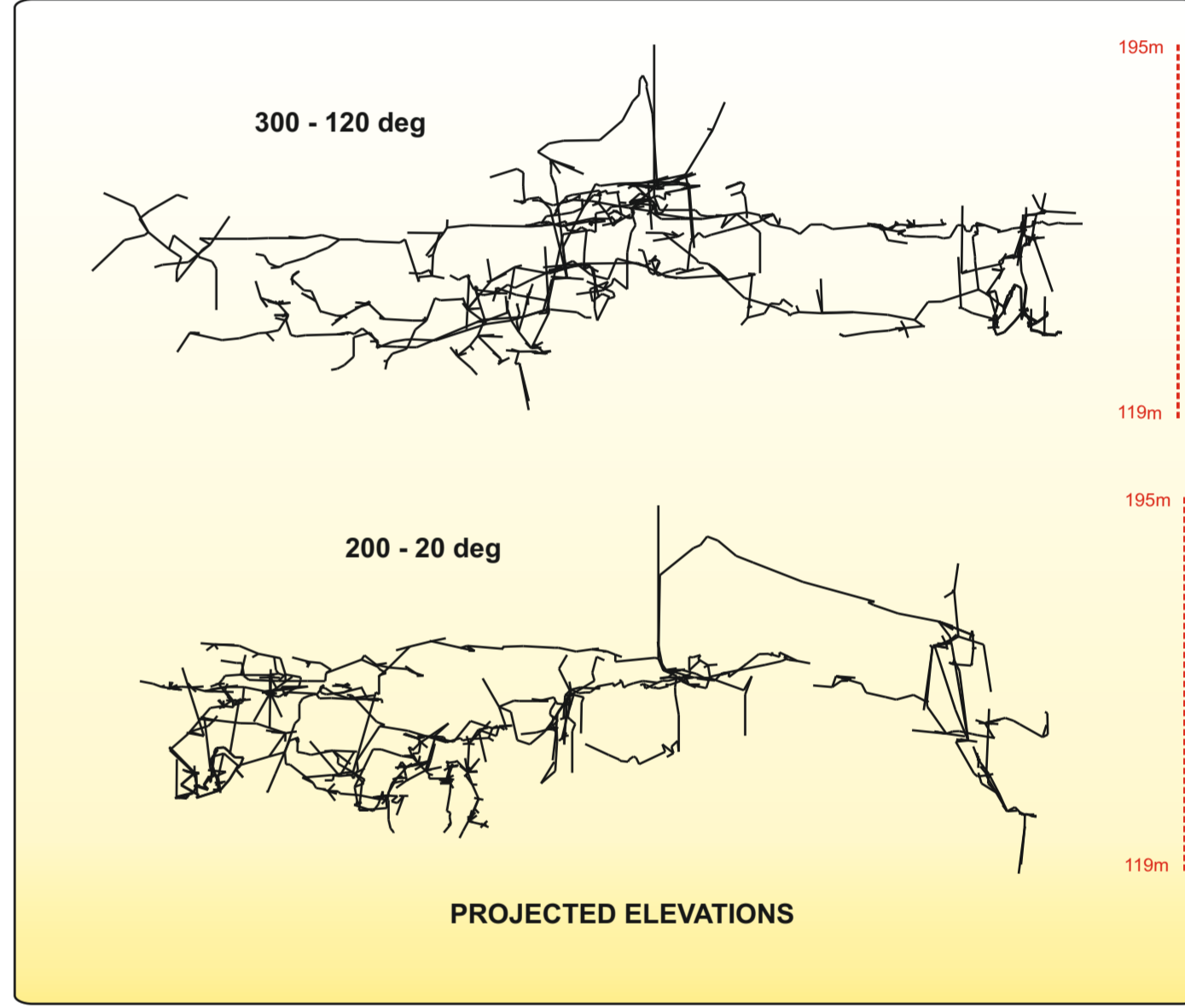
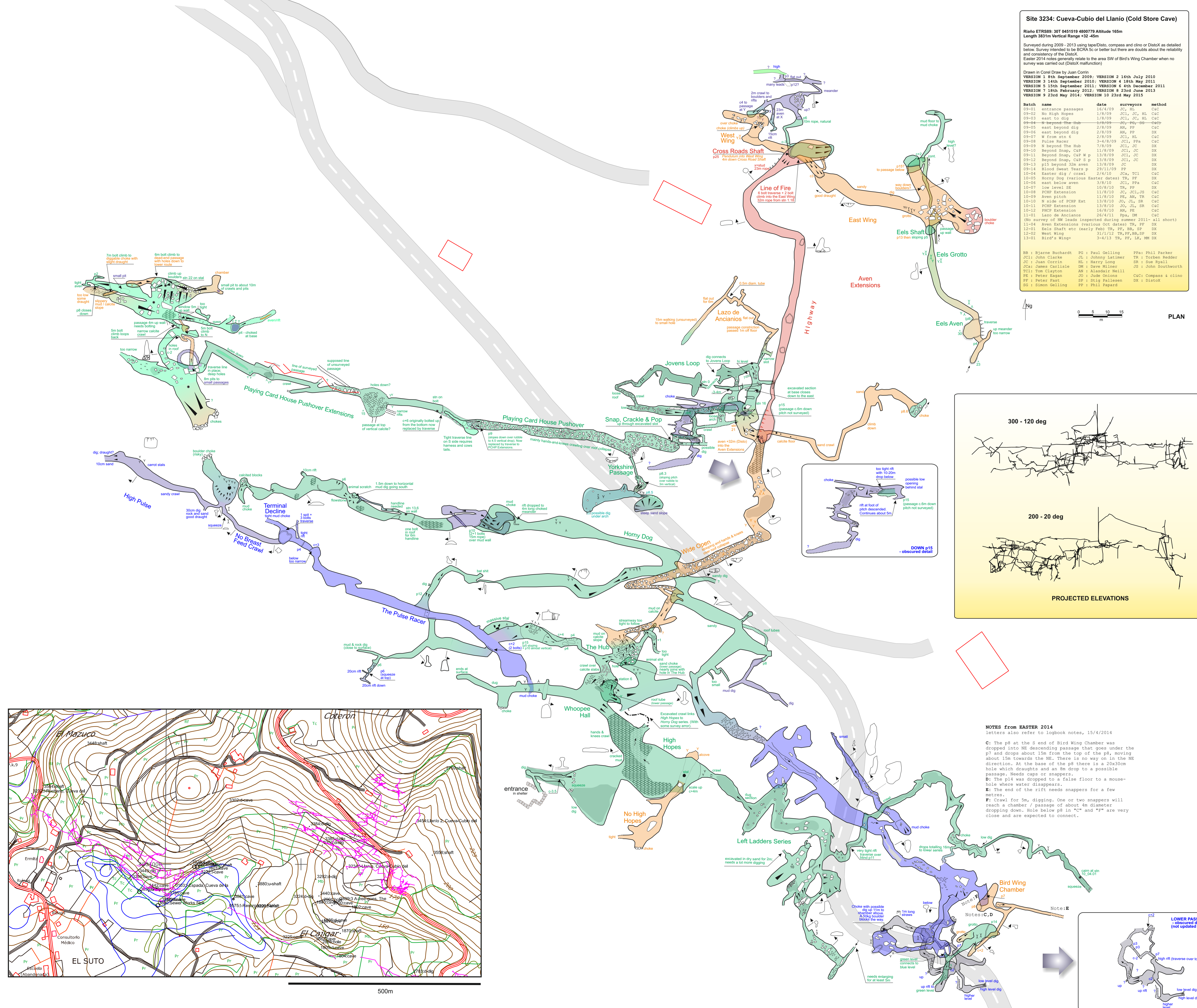
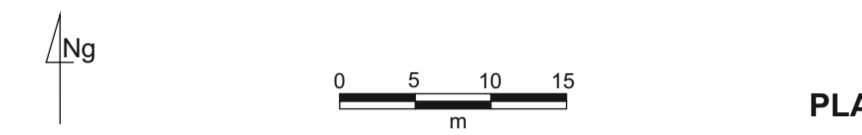
Drawn in Corel Draw by Juan Corrin  
VERSION 1 8th September 2009; VERSION 2 16th July 2010  
VERSION 3 14th September 2010; VERSION 4 16th May 2011  
VERSION 5 15th September 2011; VERSION 6 4th December 2011  
VERSION 7 18th February 2012; VERSION 8 23rd June 2013  
VERSION 9 23rd May 2014; VERSION 10 23rd May 2015

Batch name	date	surveyors	method
09-01	entrance passages	JC, HL	CAC
09-02	No High Hopes	JCL, JC, HL	CAC
09-03	east to dig	JCL, JC, HL	CAC
09-04	N beyond The Hub	JCL, JC, HL	CAC
09-05	east beyond dig	AN, PP	CAC
09-06	east beyond dig	AN, PP	DX
09-07	W from stn 6	JCL, HL	CAC
09-08	Pulse Racer	3-4/8/09 JCL, PFA	CAC
09-09	N beyond The Hub	7/8/09 JCL, JC	DX
09-10	Beyond Snap, CAP	11/8/09 JCL, JC	DX
09-11	Beyond Snap, CAP W p	13/8/09 JCL, JC	DX
09-12	Beyond Snap, CAP S p	13/8/09 JCL, JC	DX
09-13	p15 beyond 32m aven	13/8/09 JC	DX
09-14	Blood Sweat Tears p	29/11/09 PP	DX
10-04	Baster dig / crawls	2/4/10 JCL, TCI	CAC
10-05	Henry Dog (various Easter dates)	TR, PP	DX
10-06	east below aven	3/8/10 JCL, PFA	CAC
10-07	low level SE	13/8/10 TR, PP	DX
10-08	PCHP Extension	11/8/10 JC, JCL, JS	CAC
10-09	Aven pitch	11/8/10 TR, AN, TR	CAC
10-10	N side of PCHP Ext	13/8/10 JCL, JL, SR	CAC
10-11	PCHP Extension	13/8/10 JCL, JL, SR	CAC
10-12	PCHP Extension	16/8/10 AN, PE	CAC
11-01	Lazo de Ancianos	25/4/11 PFA, DM	CAC
(No survey of NW leads inspected during summer 2011- all short)			
12-04	Aven Extensions (various Oct dates)	TR, PP	DX
12-01	Bels Shaft etc (early Feb)	TR, PP, BB, SP	DX
12-02	West Wing	31/1/12 TR, PP, BB, SP	DX
13-01	Bird's Wings	3-4/13 TR, PP, JL, WM	DX

BB : Bjørn Buchardt  
JCL: John Clarke  
JC : Juan Corrin  
JCL: James Carlisle  
TCI: Tom Clayton  
PE : Peter Egan  
PP : Peter Pat  
SG : Simon Gelling

PG : Paul Gelling  
JL : Johnny Latimer  
HL : Harry Long  
DM : Dave Hillier  
AN : Aisdaid Neill  
JO : Jude Onions  
PF : Phil Papard

PFA: Phil Parker  
TR : Torben Redder  
SR : Sue Ryall  
JS : John Southworth  
CAC: Compass & clinometer  
DX : DistoX



**NOTES from EASTER 2014**  
letters also refer to logbook notes, 15/4/2014

**C:** The p8 at the S end of Bird Wing Chamber was dropped into NE descending passage that goes under the p7 and drops about 15m from the top of the p8, moving about 15m towards the NE. There is no way on in the NE direction. At the base of the p8 there is a 20x30cm hole which draughts and an 8m drop to a possible passage. Needs caps or snappers.

**D:** The p14 was dropped to a false floor to a mouse-hole where water disappears.

**E:** The end of the rift needs snappers for a few metres.

**F:** Crawl for 5m, digging. One or two snappers will reach a chamber / passage of about 4m diameter dropping down. Hole below p8 in "C" and "E" are very close and are expected to connect.

