

Site 3234: Cueva-Cubio del Llanio (Cold Store Cave)

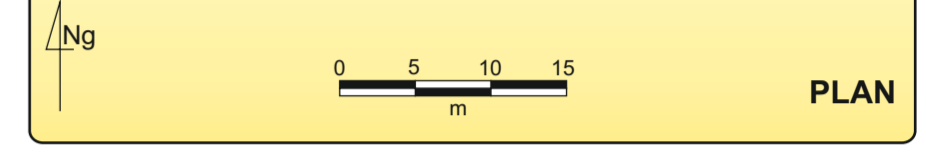
Riacho 30T 451621 480988 Altitude 163m Length 362m Vertical Range +32 -45m

Surveyed during 2009, 2010, 2011 using tape/Disto, compass and clinometer or DistoX as detailed below. Survey intended to be BCRA 5c or better but there are doubts about the reliability and consistency of the DistoX.

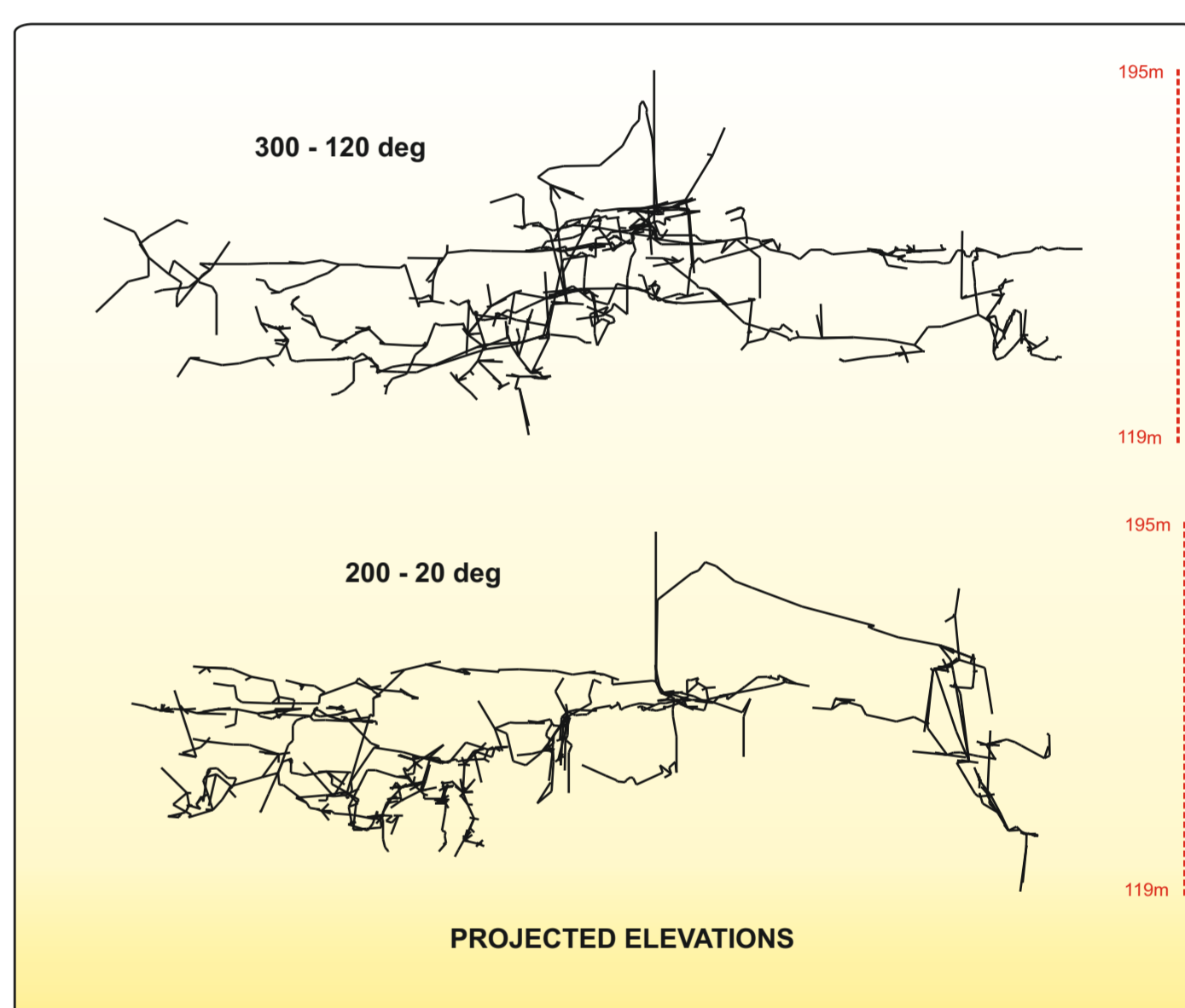
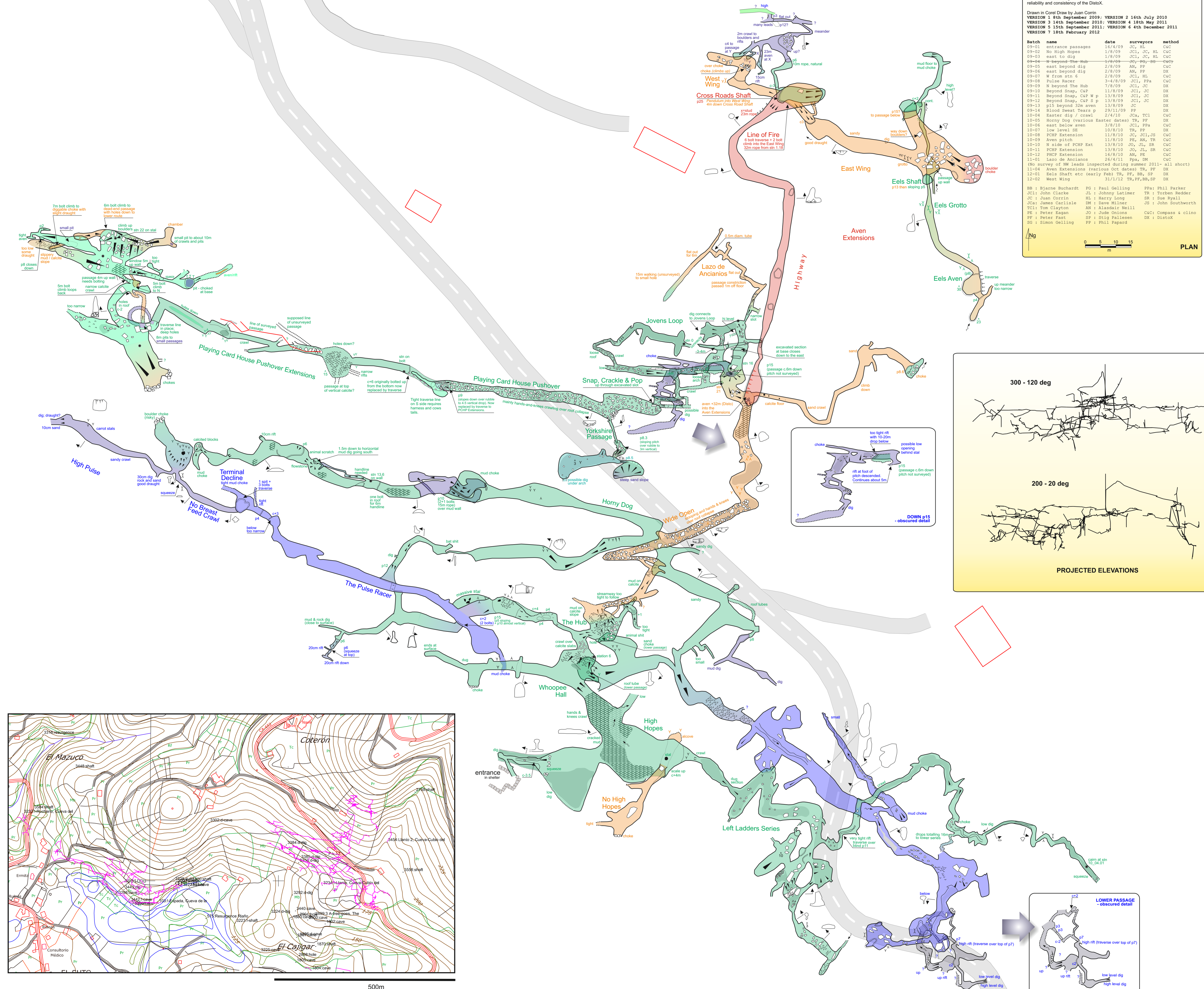
Drawn in Corel Draw by Juan Corin
 VERSION 1 18th September 2009; VERSION 2 16th July 2010
 VERSION 3 14th September 2010; VERSION 4 18th May 2011
 VERSION 5 15th September 2011; VERSION 6 4th December 2011
 VERSION 7 18th February 2012

| Match name | date | surveyors | method | |
|------------|---|----------------|----------------|-----|
| 09-01 | entrance passages | 16/4/09 | JC, HL | C&C |
| 09-02 | No High Hopes | 1/8/09 | JCL, JC, HL | C&C |
| 09-03 | east to dig | 1/8/09 | JCL, JC, HL | C&C |
| 09-04 | N beyond The Hub | 1/8/09 | JCL, JC, HL | C&C |
| 09-05 | east beyond dig | 2/8/09 | AN, PF | DX |
| 09-06 | east beyond dig | 2/8/09 | AN, PF | DX |
| 09-07 | M from stn 6 | 2/8/09 | JCL, HL | C&C |
| 09-08 | Palms Racer | 1-4/8/09 | JCL, PFA | C&C |
| 09-09 | N beyond The Hub | 1/8/09 | JCL, JC | DX |
| 09-10 | Beyond Snap, C&P | 11/8/09 | JCL, JC | DX |
| 09-11 | Beyond Snap, C&P p | 13/8/09 | JCL, JC | DX |
| 09-12 | Beyond Snap, C&P S p | 13/8/09 | JCL, JC | DX |
| 09-13 | p15 beyond 32m aven | 13/8/09 | JCL | DX |
| 09-14 | Blood Sweat Tears p | 29/11/09 | PF | DX |
| 10-04 | Easter dig / crawl | 2/4/10 | JCA, TCI | C&C |
| 10-05 | Horny Dog (various Easter dates) | TR, PF | DX | |
| 10-06 | east below aven | 3/8/10 | JCL, PFA | C&C |
| 10-07 | low level SE | 10/8/10 | TR, PF | DX |
| 10-08 | PHCP Extension | 11/8/10 | JC, JCL, JS | C&C |
| 10-09 | Aven pitch | 13/8/10 | TR, AN, TR | C&C |
| 10-10 | N side of PHCP Ext | 13/8/10 | JO, JL, SR | C&C |
| 10-11 | PHCP Extension | 13/8/10 | JL, SR | C&C |
| 10-12 | PHCP Extension | 16/8/10 | AN, PF | C&C |
| 11-01 | Lazo de Ancianos | 26/4/11 | PFA, DM | C&C |
| 11-02 | No survey of NW leads inspected during summer 2011 - all short! | | | |
| 11-04 | Aven Extensions (various Oct dates) | TR, PF | DX | |
| 12-01 | Eels Shaft etc (early Feb) | TR, PF, BS, SP | DX | |
| 12-02 | West Wing | 31/1/12 | TR, PF, BS, SP | DX |

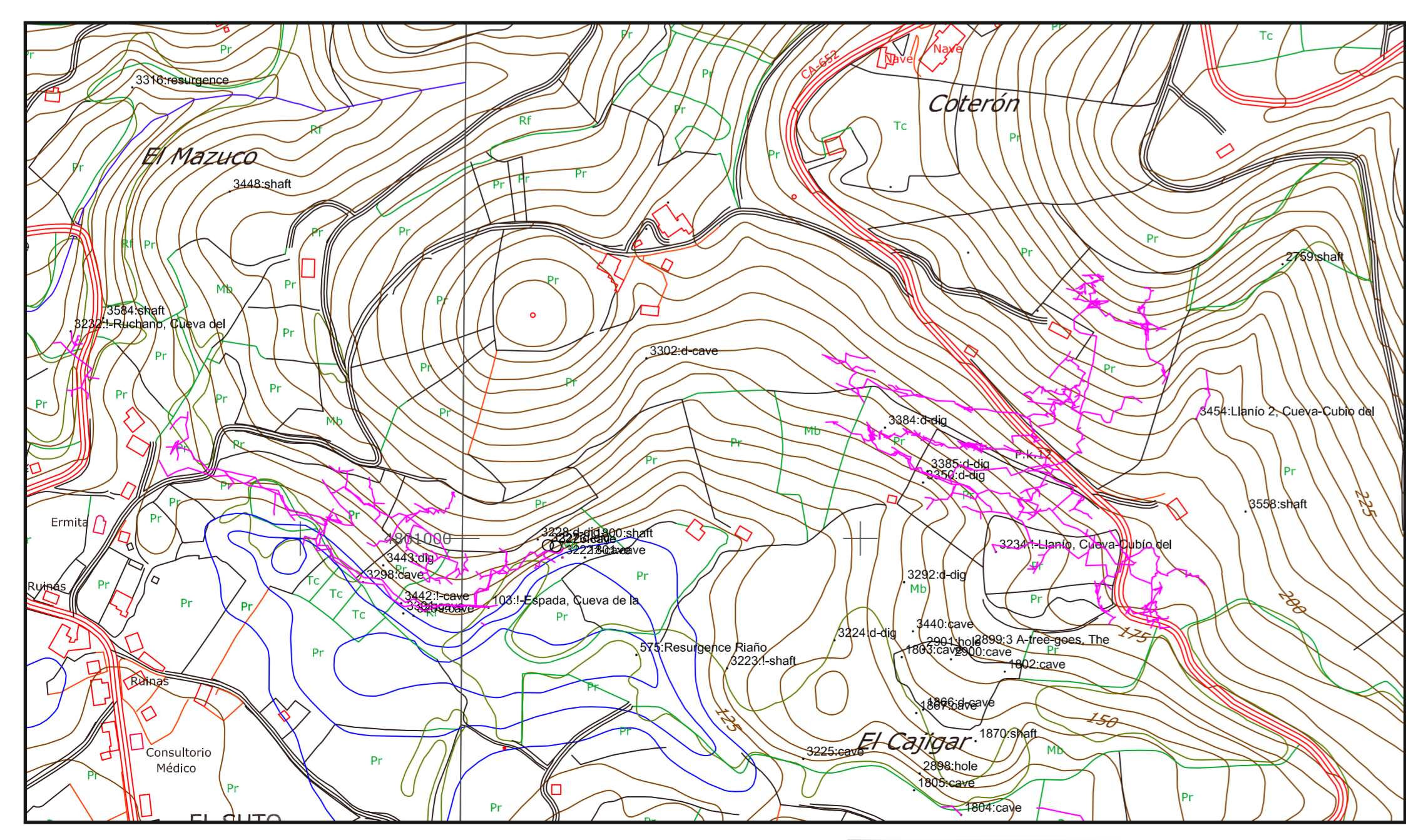
BB = Bjørn Buchardt; FG = Paul Gelling; PFA = Phil Parker
 JCL = John Clarke; JL = Johnny Latimer; TR = Torben Redder
 JC = Juan Corin; HL = Harry Long; SR = Sue Ryall
 JCA = James Carlisle; DM = Dave Milner; JS = John Southworth
 TCI = Tom Clayton; AN = Alasdair Neill
 PE = Peter Eagan; JO = Jude Onions; C&C = Compass & clinometer
 PF = Peter Faust; SP = Stig Fallesen; DX = DistoX
 SG = Simon Gelling; JP = Phil Papard



PLAN



PROJECTED ELEVATIONS



500m