

LOGBOOK

Year: 2022

Season: autumn

Logbook pages scanned to jpg then combined into a pdf file using <http://smallpdf.com/>

Juan Corrin, November 2022

AUTUMN 2022

①

27/9/22 Guy sent updated details of Arredondo sites and new holes - to be given MCP codes eventually.

Je joins le fichier des cavités sur la zone au nord d'arredondo.
100 cavités "nouvelles" à partir de la torca de la Jaula n° 2782, page 73.
Pour les anciennes cavités quelques informations supplémentaires ont été ajoutées (description etc...) en général mises en rouge.
Pour faciliter le travail j'ai mis pour chaque cavité le numéro MCE correspondant.
Pour certaines cavités (rasa, fuentes) des infos supplémentaires et photos seront envoyées à posteriori;
Bonne soirée

I attach the file of the cavities on the zone north of arredondo.
100 "new" cavities from the torca de la Jaula n° 2782, page 73.
For the old cavities some additional information has been added (description etc...) generally put in red.
To facilitate the work I put for each cavity the corresponding MCE number.
For certain cavities (rasa, fuentes) additional information and photos will be sent later;
Have a good evening

OCTOBER 2022. PHIL GOODWIN. JOHN SOUTHWORTH

4.10 A MONTE LLUSA. 448561 4804269 (5210) (photos)
AT BASE OF SHAKEHOLE IS A HANDS AND KNEES CRAWL TO THE TOP OF A LARGE FALLEN BLOCK AND THEN AN AWKWARD 3M CLIMB DOWN TO A L/H AND R/H BRANCH PASSAGES WHICH CHOKE, SOME NICE FORMATIONS. LENGTH 25M. DEPTH 6M.

4.10 B MONTE LLUSA, 448493 4804249 (5211)
ON THE SIDE OF ONE OF A DOUBLE SHAKEHOLE IS AN HORIZONTAL NARROW SLOT EXTENDING IN FOR 1M WHICH BECOMES TO TIGHT.

4.10 C MONTE LLUSA, 448638 4804412 (5212)
SHOWING UP ON THE CANTABRIAN MAP SITE ON LIDAR IS A DEPRESSION WHICH IS IN FACT A LARGE CONCRETE WATER TANK, AT THE UPHILL END OF WHICH IS AN EXPOSED HORIZONTAL LOW BEDDING ABOUT 4M ~~LONG~~ WIDE WHICH FEEDS THE WATER FOR THE TANK. TO NARROW TO FOLLOW.

5.10 A NAVAJEDA 444250 4801006 (5213) (photo)
PART WAY DOWN A STEEP SHAKEHOLE IS A 1.5M HIGH BY 3M LONG ENTRANCE EXTENDING IN 2.5M ENDING IN A BLANK WALL.

5.10 (5192) MONTE LLUSA

FOUND EASTER 2022 WITH DEEP POOL AT THE ENTRANCE WHICH HAD DRAINED AWAY THIS TIME TO REVEAL A HANDS AND KNEES UPWARD CRAWL TO TIGHT VERTICAL SQUEEZE TO A ROOMY CHAMBER WITH A TIGHT SECTION AT THE TOP OF A LARGER 3M DROP DOWN TO WATER, A STREAM CAN BE HEARD RUNNING AND A GOOD DRAUGHT AND ECHO, PLAN TO RETURN TO ENLARGE WITH CHEMICAL MEANS, LENGTH 17M.

6.10 (978) LA GATUNA

QUICK TRIP TO LOOK AT ~~CH~~ CHOKER AT END OF CAVE AND FOUND NARROW VERTICAL RIFT WHICH SEEMS TO HAVE A LARGE PASSAGE ABOVE, DRAUGHTING WELL.

7.10 (978) + ALF LATHAM LA GATUNA

RETURNED TO ENLARGE RIFT WITH SNAPPER'S BUT POOR RESULT BEING SANDSTONE BLOCKS. SET UP THREE PULLEY PULLING SYSTEM WHICH SUCCEEDED IN REMOVING THE BLOCKAGE TO REVEAL A CLIMB UP INTO A LOW ~~CIRCULAR~~ CIRCULAR CHAMBER SOME SIX METRES WIDE BUT ALL WAYS ON CHECKED OR TO TIGHT.

8.10 (5192) + PETER SMITH. MONTE LLUSA

RETURNED TO RIFT AT ^{END} AND ENLARGED TIGHT SECTION ABOVE 3M DROP AND ALSO ANOTHER ONE TO GAIN ENTRY TO STAND UP PASSAGE THEN UP A SLOPE TO CHAMBER WITH LOW CRAWL TO CHAMBER 4M X 4M X 4M WITH NO OBVIOUS WAY ON. THE LOWER SECTION OF THE CAVE HAS MUD DEPOSITS ON ROOF AND WALLS WHICH SUGGESTS THESE SECTIONS ARE FLOOD PRONE.

8.10 EXAMINED AREA BEHIND SITE 4098 AND FOUND TWO SITES, ONE IS SHAKEHOLE 8.10A WHERE STONES DROP ABOUT 2M IN MUD TUBS WITH NO BED ROCK SHOWING. ANOTHER IS CAVE 8.10B IN CLIFF FACE WHICH IS ABOUT 1M IN IS SMALL PASSAGE ON LEFT WHICH DRAUGHTS WELL, WOULD TAKE A LOT OF WORK TO OPEN THIS UP 8.10A 447464 / 8.10B 0447660 4803178
(5214) 4803115 (5215)

9.10 4459 NAVAJEDA

EXAMINED SITE 4459 FOR POSSIBILITY OF A DIG BUT FOUND TO BE A THROUGH TRIP WHICH THE SURVEY DOES NOT MAKE CLEAR. THE LARGE SECTION IS THE BOTTOM ENTRANCE.

10.10 MONTE LLUSA

THE MAIN REASON FOR VISITING THIS AREA WAS TO INVESTIGATE A FEATURE SHOWING ON A CONTOUR MAP AS A SHARP KINK, 10.10A SMALL 2M DEEP HOLE IN MUD ON SIDE OF SHAKEHOLE

THIS IS THE SHAKEHOLE AT THE KINK FEATURE
448752 4804777 (5216)

10.10.B VERY NARROW VERTICAL SLOT AT BASE OF SHAKEHOLE
448780 4804824 (5217)

10.10.D LOW CAVE IN ROCK FACE PART WAY DOWN SHAKEHOLE
448817 4804790 (5218)

10.10 BOTTOM OF VERY STEEP SIDED SHAKEHOLE IS A 2M DEEP SHAFT, TOTALY BLOCKED. NO PLANS TO RETURN TO ANY OF THESE. (5219) LOOKED AT OTHER SHAKEHOLES NEARBY.

A WALK ON OPPOSITE SIDE OF HILL FROM CHURCH CAVES NEAR SITE 4459 IN NAVAJEDA, FOUND TWO CAVES

11.10 A REQUIRES BOULDERS REMOVING FROM ENTRANCE TO WHAT LOOKS LIKE A HANDS AND KNEES CRAWL FOR ABOUT 5M. PLAN TO RETURN IN NEXT FEW DAYS, GOOD DRAUGHT. 0443906 4801416 (5220) photos

11.10 B EXCAVATED ENTRANCE TO FLAT OUT CRAWL FOR 4M THEN LEFT HAND BEND WHICH THEN BECOMES TO TIGHT. THESE CAVES ARE LESS THAN 200M FROM OUR APARTMENT 0443888 4801520 (5221) photos

12.10

RETURNED TO CAVE 11.10A AND REMOVED BOULDER BLOCKAGE TO HANDS AND KNEES CRAWL TO LOW SECTION WHICH REQUIRED FURTHER DIGGING TO AN ENLARGMENT AT THE END TO A PASSAGE ON THE LEFT THAT WOULD REQUIRE DIGGING AND THE SPOIL TAKING OUT TO THE SURFACE SO NO PLANS TO RETURN, LOST ~~CROW~~ CROWBAR SOMEWHERE IN THE CAVE. (5220)

ON A WALK IN THIS AREA WE FOUND WHAT LOOKS LIKE A CAVE PASSAGE AT THE BOTTOM OF A 2M ROCK FACE, IT WOULD REQUIRE LARGE BOULDERS REMOVING FROM THE ROCK FACE BUT REMOVING THEM BY CHEMICAL MEANS WOULD BE DIFFICULT AS THE SITE IS NEAR SOME PRIVATE HOUSES

12.10A. 0443902 4801395

(5222)

13.10

DAY OFF IN SANTANDER,

14.10

TRIED AGAIN TO FIND A ROUTE TO SITE (5029) BUT FAILED, ALTHOUGH NOT FINDING THE SITE WE DID DISCOVER SOME EASY ACCESS PATHS INTO THE LLUSA AREA.

15.10

PLAN WAS TO DIG AT SITE (4093) WHICH WE FOUND EIGHT YEARS AGO AND LOOKED A GOOD PROSPECT. ON ARRIVAL WE WERE UNABLE TO FIND THIS SITE, PROBABLY THE FARMER HAS USED IT TO DUMP SLURRY.

16.10

RETURNED TO ONGOING DIG AT SITE (3234) WITH ALF LATHAM AND PHIL PAP. EXTENDED IT ABOUT ~~2~~ 2M BUT THE CONTINUATION NOT LOOKING. MYSELF AND PHIL G HAVE NO PLANS TO RETURN.

17.10

A WALK IN WOODLAND BETWEEN SITES (4489) AND (5186) DOWN TO FIELD BOUNDARY TO THE WEST AT NAVAJEDA. NOT WORK FOR NO RESULTS.

18.10

RETURN TO CAVE 5192 TO SURVEY WITH PEE SMITH.
SURVEY COMPLETED TO FINAL CHAMBER WHICH HAS TWO POSSIBLE
WAYS ON. A CLIMB UP THE RIGHT HAND WALL WHICH THEN
TURNS SLIGHT RIGHT ENCOUNTERS A NARROW VERTICAL
RIFT WHICH COULD BE ENLARGED WITHOUT TOO MUCH
EFFORT TO A SIZEABLE WITH A FANTASTIC ECHO. A CLIMB
UP A CALCITED RIFT ON THE FAR SIDE OF THE CHAMBER
ENDS IN A HORIZONTAL PASSAGE BLOCKED BY A FLAKE WHICH
NARROW PASSAGES BOTH SIDES. IT OPENS UP BEYOND

Alf Latham's Report, 23 Oct/2022. (Alf L., Chris. Camm., Nigel Easton and Phil. Parker.
See C Camm's reports on this group.

5 Oct. Moncobe and Torca de Michelin. 3021 A quick check of the outward draft. Couldn't readily find
owner for permission to dig. Farmer of barn next door did not appear to know who owned it. No joy
looking around in adjacent woods except for badger holes.

6 Oct. Navajeda 5186. About 10 m in from field in the wood and near the road up. Hole sometimes
has a stream. Stream in wet weather has been observed to bubble up in places in the field. Hole has
discarded metalwork in it. Either a ladder or scramble leads down between muddy rock walls with
earth falling in. Depth about 10m to a kiddie's bike. Investigated by Phil P. to grotty digs in what
looks like a downstream rift.

7 Oct. Hoznayo-Riaño. 0978 Alf, Phil G. John S. See earlier a/c Use of snappers, ropes pulleys and various other
tactics to gain upper bedding plane through boulders. Wide collapse area. No real way on.

8 Oct Moncobe. 3091 A fresh dig at 3091 for a few hours. Slight draft under wall in entrance corner
but no fresh incentives forthcoming.

9 Oct. 3112, Peña Encaramada. Look at 3112 but failed to get through all the logging infill to look at
shaft identified after burning of 2008.

3014. Entered 3014 to witness very strong draft. Two pairs of bolts noted - one of Petzyl type
and through bolts for ladder to pit at L side of entrance chamber. Harry Long's entry for 2008 of
Smith and Clarke's work says it ends in a small drafting hole with 30m deep and 100 m of passages.
Confirmed position of entrance except it is on northern side of shakehole. Head of the pitch is v
tight.

12 Oct 3014. Nigel E and Alf. New hanger put in at top of pitch. Alf capped top of tight hole lower
down but still too tight for commitment.

13 Oct 3014. Alf. Capped pitch to enable descent. At bottom of pitch to chamber confirmed
interconnected cross rift complex. A slippery 4 m drop not descended by solo caver but scuff marks
visible of previous descent.

14 Oct. 1410A1, 1410A2, 1410A3. Approximately 447059 4801186 5223 447064 4801202. 447051
4801210; Thrashing through woods on down-valley side of 3014. Lengthy deep gulley yielded shelter
cave in the bottom, a cave with a rabbit hole size dig and, further up, a descendible shaft into a cave
full of farm waste. A bolt and ladder would be need to descend over the waste bags and bottles
down to a right bend. 5224 5225 rabbit.

1410A4 and 1410A5. Approximately. 447085 4801243. Further out and lower near the edge of the
field is a shallow gulley in vines leading to a 3 m drop, and at the start of the gulley is a small
diameter hole in the bank at head level that drafts slightly. 5226

See previous a/c 3234
16 Oct. Alf with JS, PP, P G. to dig at H. Cold Store for 3 hrs. 1.5 m progress. Digging tools left in.

5222?

5

19 Oct. JS1210A. Chris C, Phil G., John S., Alf Latham. Navajeda. Just in the wood from cow-field. A rift against a back wall with possible draft out found by JS and P G earlier. Hammer, chisel and wire tether used to gain access. Alf descended body-size rift with two solid walls. Soon led to crawl and stand-up section. The rift proved to intersect a broad-arch roof, low passages in both in-wood and out-of-wood directions, 5m and 3m respectively. Some digging needed for further progress in either direction.

20 Oct. 3014 Alf. Put bolt and hanger on 4m pitch (where's the reported 9m pitch?). Steep short slope to junction. L (and to the north) led to short squirm-climb down into small chamber. At end, left led to tight rifts both along and up. On R a short squirm led to passage going north but too tight for this guy to get round but was investigated by S and C (scuff marks). Back at junction below pitch led down a short steep body-size slope of shifting cobbles. Tight hole at bottom is probably the drafting hole reported by S and C, but could be dug out and/or capped. It drafts out. Stones rattle on down. Under left wall is access to a hands and knees crawl not investigated on threat of being entombed. It had not been entered by S and C.
All bolts and hangers left in.

5227 N30T 0451700 4800646 ↑170

22 Oct. Alf and Chris C. Riaño. Cueva Sin Sendero – probably a detached part of 3234 found by Chris and Nige the day before. Survey Alf, Dug by Chris. Entrance under a tree about 12-15 m down from road barrier. Short 5m ladder descent makes climb easier. Into sloping chamber leading to rift that is blind but is about heading for Ali Chamber. One blind side branch for 4m. On R near bottom of slope is slide behind stal barrier to nicely decorated chambers. A drop L behind a boulder leads to squeeze into passage leading to a rift (bats) that goes past helictites for about 15m. Near the squeeze is a diggable hole down into a flat mud floor.
Opposite L in entrance chamber leads downslope to a hole in the wall. Dug-out squeeze and drop leads to rolling-pebble ramp to small 'U-turn' chamber. Underneath leads to short crawl (care) past stalactites leads rapidly down into a large 8m diameter, 5 m high chamber, well decorated, accessed via a slippery ledge. Holes and alcoves in flowstones investigated but none look promising.

15th October – 3234 Cueva-Cubio del Llanio – Phil Papard, John Southworth, Alf Latham and Phil Goodwin

Digging in sandy dig to NE of The Hub. Lot of sand and clay removed to get about 2m progress forward in gap at top of sand infill. Testing with a shovel showed the roof now dips down a little but enough for the gap to close off with fill to roof all way round. No immediate intension to resume the dig. But the lack of gap could explain the lack of draught, so it may we worth a further dig to check if a little more progress may open up a gap and if so if there is any draught.

19th October – 4867 Resurgence (El Rincón) – Phil Papard and Pete Egan

Capping out final section of rift to where Forrest Hunt squeezed through in the summer. Pete went through to where Forrest had explored and confirmed the only lead is a tight crawl that needs to be explored by two or more smallish people and to survey the whole cave. If it is found the crawl does go and needs more work can then be done to allow access for more people, but this is not work the effort if the cave does not go further.

22nd October – Seldesuto area – Phil Papard, Peter Egan and Santi

Aim to surface walk hill above Seldesuto between the track to the south and the one going off this to the west (toward' s Judges house). Walked up to barn on West track and then worked way up hill, difficult going due to undergrowth until group reached more open area. It was clear the whole area was or is maintained grazing land associated with a number of cabañas (now mainly abandoned), so any open smallish holes are likely to have been filled in many years ago. The area searched was the blank are for known holes and no sites of interest were found until one open cave towards the top of the hill.

5209

~~5207~~ Pete's Cave – 449227, 4794321 Alt 463

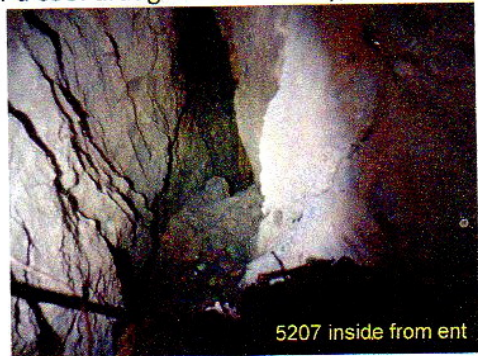
Cave at end of 1m deep and 5m long sloping hollow that is on the same line as cave (prob on



joint of small fault?). Cave starts as a 2m drop needing a little digging and ladder to reach a slope down to probably a further drop of about 4m to where a disto reading read 9.3m to what looked like it could be the floor of a small ongoing rift passage.

No draught was detected, but as this check was cursory looking for a cool draught on a hot day, this may be an error

as any draught at this high altitude would have been inward and hard to spot except with smoke etc, a better check



5207 inside from ent

for draught is needed.

23rd October – Cueva Cañuela – Family trip (Santi, wife and son; Torben, Luise, Karen, Marie, Pete Egan and Phil Papard).

Aim was to go to the big chamber (Sala Olivier Guillaume) where Sima Tonio comes in. Uneventful from entrance past traverse (needs harness and cow's tails as you have to hang on traverse line in places) to rope up to high level passage going east. (Note a better route maybe to go a little further and take a left lower route and avoid the climb and later rope drop down – see survey). The rope pitch was laddered for the children and people with no full SRT kit, but found you really need two ladders as drop is about 9m. Route finding is not straight forward, and markers are mainly to show way out not in! In most cases you can follow the draught, but best to keep track using a survey. Party turned round just short of the 10th of August Gallery, due to time spent on pitch and looking for correct way on.

20th October - 3234 Cueva-Cubio del Llanio – Peter Egan, Torben, Luise, Santi

Digging at end of High Pulse towards Fridge Door Cave (1800). Route in via "Au-pair's Crawl" and passage towards Horny Dog with drop into The Pulse Racer rigged. Digging progressed well to breakthrough, but only to 2m of walking passage to further dig – so no glory yet!

21st October - 3234 Cueva-Cubio del Llanio – Peter Egan, Torben, Santi

Capped out lump in floor of "No Breast Feed Crawl" and another tight section, so route here is now much easier. Dug for a few hours to where there is a noise of a draught, seems to be on left side of dig. Will consider on next trip to use route via The Hub as it seems shorter and avoids "Au-pair's Crawl".

23rd October 3234 Cueva-Cubio del Llanio – Peter Egan, Torben, Santi

Used route via the Hub and rigged traverse and pitch/slope down to The Pulse Racer with permanent ropes. De-rigged the "Horny Dog" route. More digging at end where after some 3m of digging the passage veered to the right with a small airspace above the sand with a very strong outward draught. The gap could be seen to continue small for a few metres. As the survey from 1800 shows a possible passage on the left of the final section this seems to fit in with the dig in 3234 if there are only a short distance to go.

25th October 5192 cave at La Estrada (Anero) - Peter Smith, Pete Egan & Phil Papard

Took capping gear to end to open up tight section found by John Southworth, that has a big echo. Difficult capping as it was on a corner with no room for full length capping bars. Opened up enough to see continuation was a round small tube a few metres long, this seemed to be the source of the echo due to resonance in the tube. Opened entrance up further to allow Pete Egan to turn and get in feet first to see if it was passable, but he found it was not big enough to get in. A lot of capping would be needed to open up the tube. It could be worth putting a camera down to the end to see if there is any larger area beyond. On opposite side of end fault chamber a high rift was pushed and surveyed but did not go further. Below is a small stream inlet but it too tight to push.

29th Oct Juan + Penny 360° photos of Aguanares
(0713) in drought. Bottom + middle entrances

Date: Mon, 31 Oct 2022 15:59

Hi Juan.

(5214)

10.10.D is 448832 4804776, I think the rioja has a part to play in any of my omission's and other mistakes in the report after looking at it in the clear light of day.

(5222)

Told Alf and Chris about site 12.10.A so went to help them pull the last few boulders out of the entrance rift. Alf got down this tight rift to a stand up passage with two low passages going off, one into the hill and the other in the direction of the hillside slope below the entrance, the one into the hill needs digging. Chris said he would include the details in their report, the date was the 19.10.2022.

In cave (5192) is a low level very muddy passage going off at a three way junction which I forgot to look at, this

might have been looked at since Pete and my trip if so it should show up when Pete draws up the survey.

Cheers

John.

From: guy.simonnot@gmail.com,

To: smith_peter2004@yahoo.es, uzueka@aol.com,

Subject: Torca de Rotura

Date: Thu, 10 Nov 2022 9:34

Attachments: 2013 Rotura torca coupe.jpg (591K)

(0753)

Ci-jointe la coupe développée de la torca de Rotura après la jonction du 31 octobre.

J'enverrai plus tard la topo visual entre le Canyon et l'ex base terminus de rotura à -73 avec quelques commentaires.

Il faudra peut-être envisager un léger repositionnement de la Vallina : quelques mètres plus élevée et une trentaine de mètres + à l'est.

Avons redescendu la torca Xls dimanche dernier. Le fond semble bien bouché et nous n'avons pas retrouvé le courant d'air signalé (à revoir ?)

Amicalement

Guy

(0517)

Attached is the developed section of the torca of Rotura after the junction of October 31.

I will later send the topo visual between the Canyon and the former rotura terminus base at -73 with some comments.

It may be necessary to consider a slight repositioning of the Vallina: a few meters higher and around thirty meters + to the east.

Went down the torca Xls again last Sunday. The bottom seems well clogged and we have not found the current of air reported (to be reviewed?)

Sincerely



From: guy.simonnot@gmail.com,

To: smith_peter2004@yahoo.es, uzueka@aol.com,

Subject: rotura more

Date: Wed, 16 Nov 2022 16:40

Attachments: rotura 1988 - 2022.trox (7K)

Hello Peter, Juan

J'envoie un fichier visual topo.

Il comporte

la topo 1988 de l'entrée 0 à la base du P.5. Cette partie serait à reprendre avec les instruments de mesure actuels.

Ensuite la topo de la jonction entre le point n et le point g (un peu au dessus du sol).

Puis la topo de g vers le canyon (croix blanche sur la paroi (vous ?)). Nous n'avons pu repérer que deux cairns (hitos) : e1 et f2.

Le développement à ajouter au réseau est bien modeste ! seulement 110 m jusqu'à la jonction à-95.

La jonction probable de la cueva de la rasa apportera un supplément un peu plus significatif.

Amicalement

Guy

Hello Peter, Juan

I send a visual topo file.

It comprises

the 1988 topo from entry 0 to the base of P.5. This part would have to be resumed with the current measuring instruments.

Then the topo of the junction between point n and point g (a little above the ground).

Then the guidebook from g to the canyon (white cross on the wall (you?)). We were only able to spot two cairns (hitos): e1 and f2.

The development to be added to the network is very modest! only 110m to junction at-95.

The probable junction of the cueva de la rasa will provide a slightly more significant supplement.

Sincerely

guy

MATIENZO CAVES PROJECT