

# LOGBOOK

Year: 2011

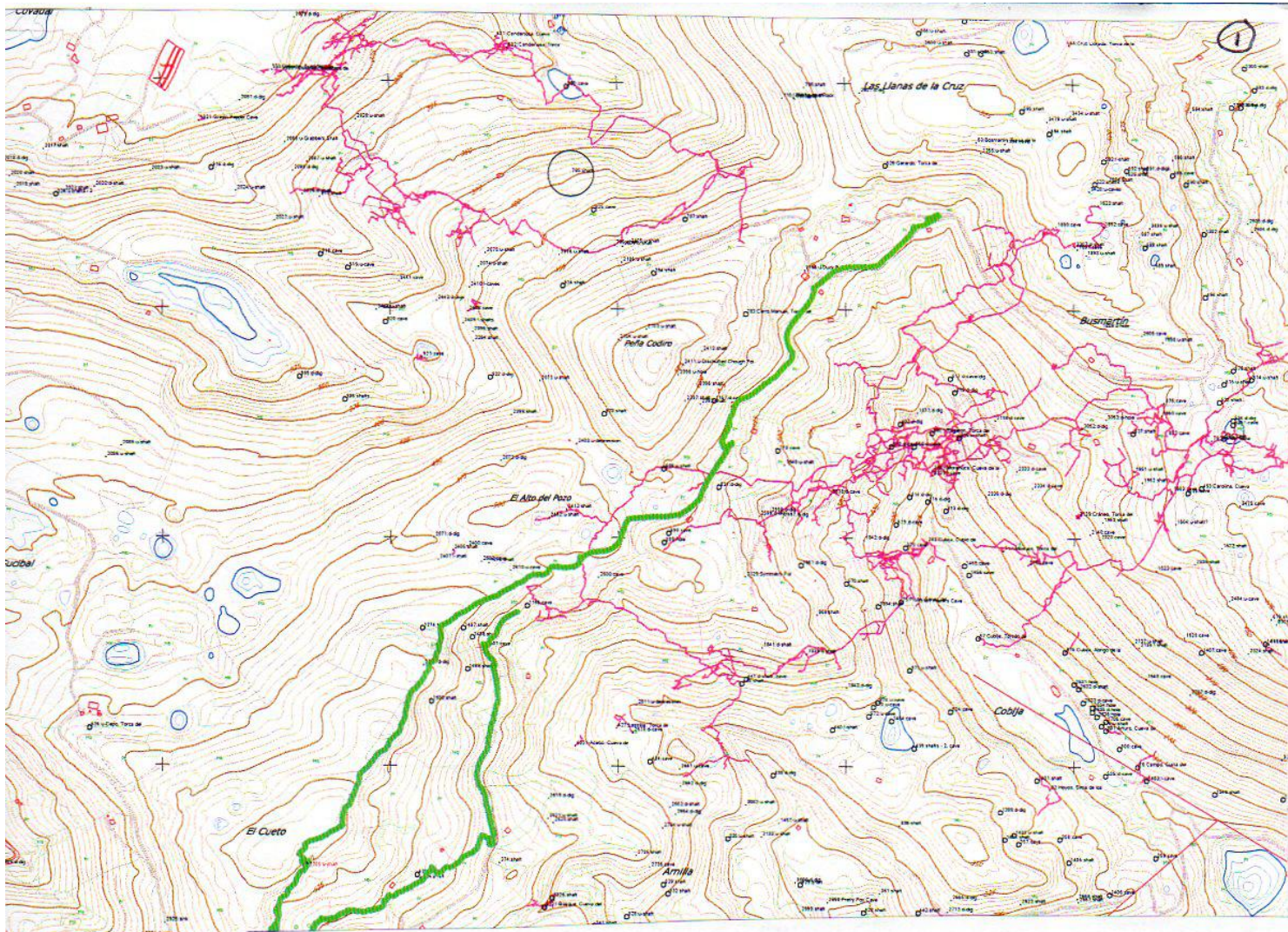
Season: January : February

Logbook pages scanned to jpg then combined into a pdf file using <http://smallpdf.com/>

*Juan Corrin, January 2015*







**21<sup>st</sup> January 2011 Bosmartín and beyond**

Juan and Penny walking from Bosmartín out towards Alisas. New sites found at



**Site 1422 30T 0448762,4796105**

3m shaft between boulders at top. Looks choked at base. Undescended.

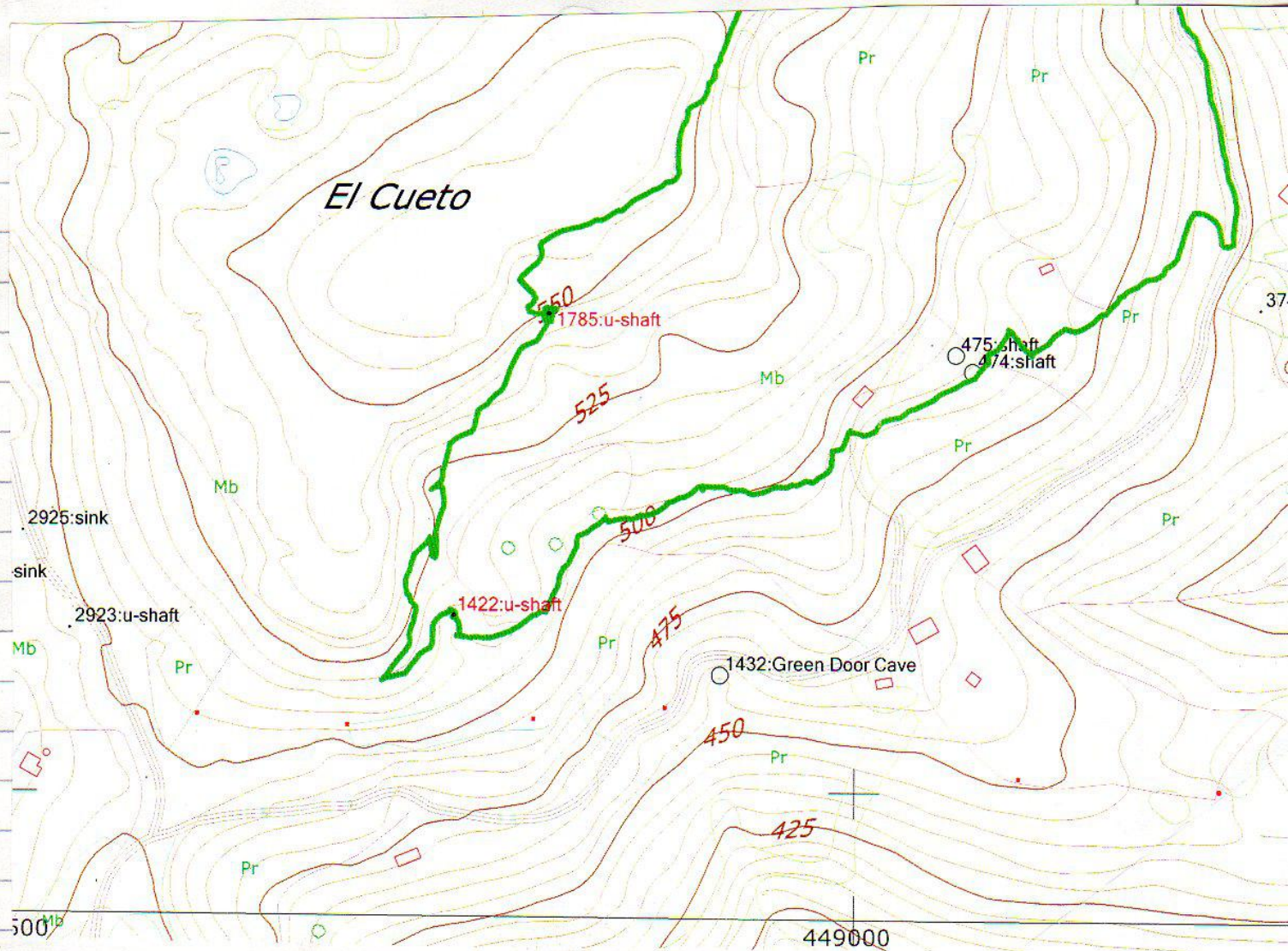


**Site 1785 30T 0448818,4796284**

About 6m deep. Drop into small chamber with stones falling further. Definitely the better looking of the two.







5/2/11 Pete walking up from Seldasito to ridge into 2 caves, crawling. One has pottery and appears to go almost through the hill (35m) ending in a boulder choke. →

(3167)

6/2/11 Pete, Ian and Juan into entrance passages of Peña de la Teta testing out Ron Obi's new slave unit.

(48)



X1 0449267 4793899

Description of 1151, (website photo is 1152). One of the caves at 660

X2 0449272 4793923

Slope to steeping passage  
+ choke. Length 10m.

= 1152 The second of the caves at 660

X3 0449125 4793841

Shaft about 20m deep, (compare shaft top with 3254!)

2796

X4 0449045 4793742

Two caves

3167 + 3255

1: about 35m long, nearly all crawling, ends in draughting boulder choke. Contains Bronze Age pottery, some of which is apparently *in situ*. Please take great care: do not touch or move this! It is hoped it will be excavated in the near future.

2: Entrance about 6m further east. About 40m long, mostly crawling. The two caves do not seem to connect.

X5 0449156 4793776

= 662

X6 0449241 4793848

= 661 Large entrance to 20m long cave and exit (which will be 1150).

X7 0449285 4793912

~~3254~~ 660

The third of the caves at 660. Behind a bramble bush.

Pete Smith

9/2/11 Gate on 1452 Hole in Road has disappeared.

## **MATIENZO CAVES PROJECT**