

LOGBOOK

Year: 2008

Season: January

Logbook pages scanned to jpg then combined into a pdf file using <http://smallpdf.com/>

Juan Corrin, January 2015

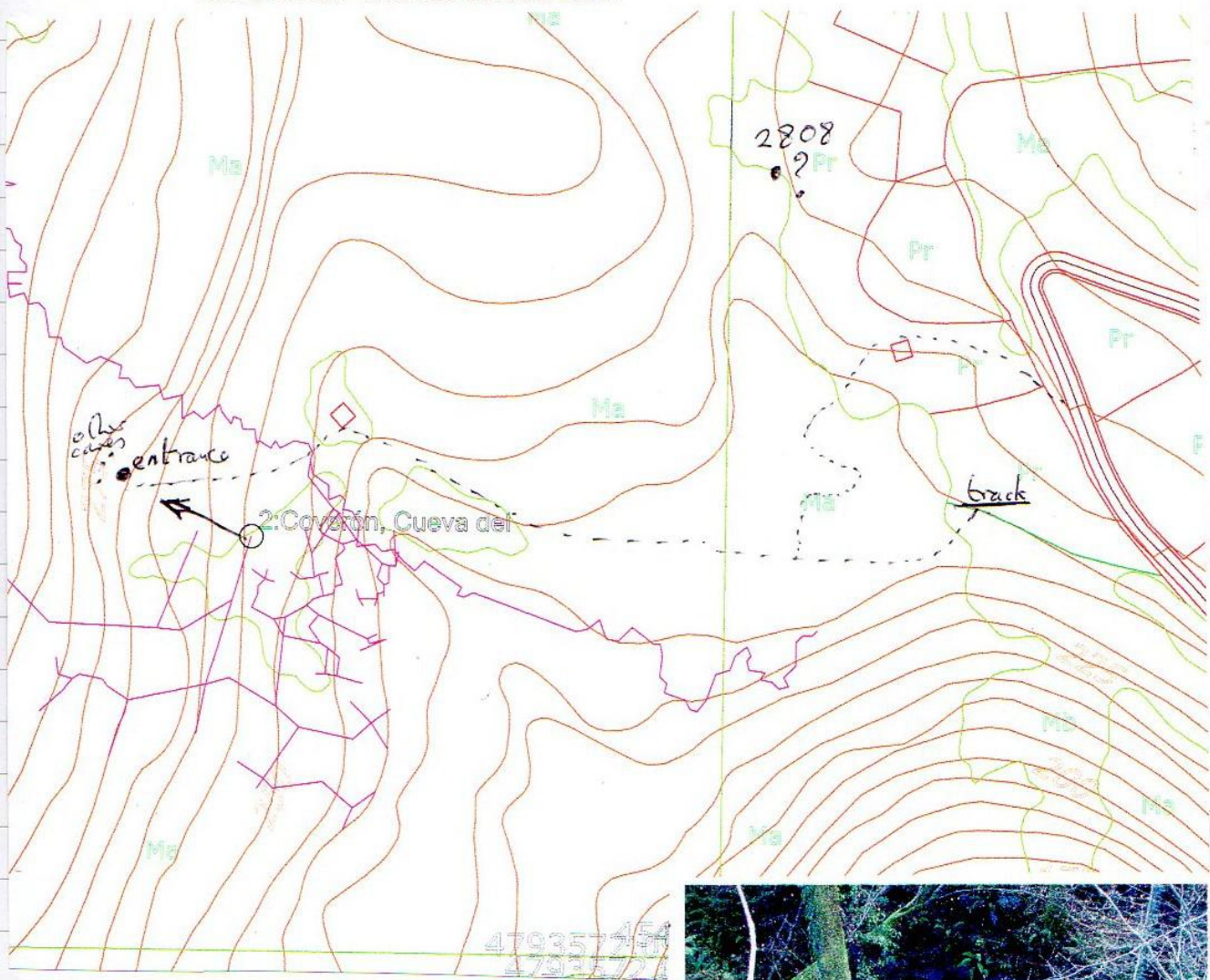
Saturday 5th January 2008

Juan and Penny into Coverón (site 0002 and now out of our area) – somewhere we'd never been. Impressive entrance complex with various small caves above the main hole. Steep and sloppy entrance slope down into big chamber. Took the small drop to the right beyond the main climb down into Tree Gallery to enter the phreatic chambers. Went to the pretties and took photos on the way out. Need to spend rather more time in the place.

The track through the jungle back to the road emerges down to the left of the barn at the bend and is easily reached by hopping over the crash barrier.

Earlier in the afternoon, when we started out looking for a track to the cave (in the wrong place) we came across an "unknown" big open shaft – why isn't this documented? Now called **site 2808**

Coverón entrance (top of the entrance slope) is at approximately 30T 0454211 4793775 altitude 270m. The entrance slopes down probably 40m so the survex file (produced by "gridding" the 1975 survey) is way out on altitudes. The unknown shaft 2808 (15m deep? But no rocks nearby to throw down) is at 30T 0454490 4793909 altitude 250m



2808



Juan and Penny walked out along the same, second off-shoot track on the Bosmartín road up the hill as we did on 31st December. Aims were to photograph in Cueva Roja below Rascavieja and find some more cave. Took rather longer than expected to get to Cueva Roja due to finding sites on the way. Returned to car as darkness was falling. Tried to keep lower than last time.

Site 2810, at the base of an interesting cliff line (with shallow cave shelter) running down a valley, is a narrow hole to a tight 3m drop which may be negotiable by a small person.

Site 2811 came as something of a surprise. Situated on the southeast side of the same valley at the base of a small scar, this is a 10m long, 3m wide cave, initially stooping and then standing up at the end where a calcited inlet is too tight. To the left is a small animal hole. In the roof there is narrow, meandering rift which is met at the entrance and reaches the surface through a number of tiny holes.

We came across **site 2806** again and Juan climbed down into a collapse and a small chamber to the right with animal bones. Length=5m; d=2m.

Shortly after this we came across **site 2812**, a short slide down into a collapse with large bones on the floor and formations over boulders up to the left. L=5; d=2m.

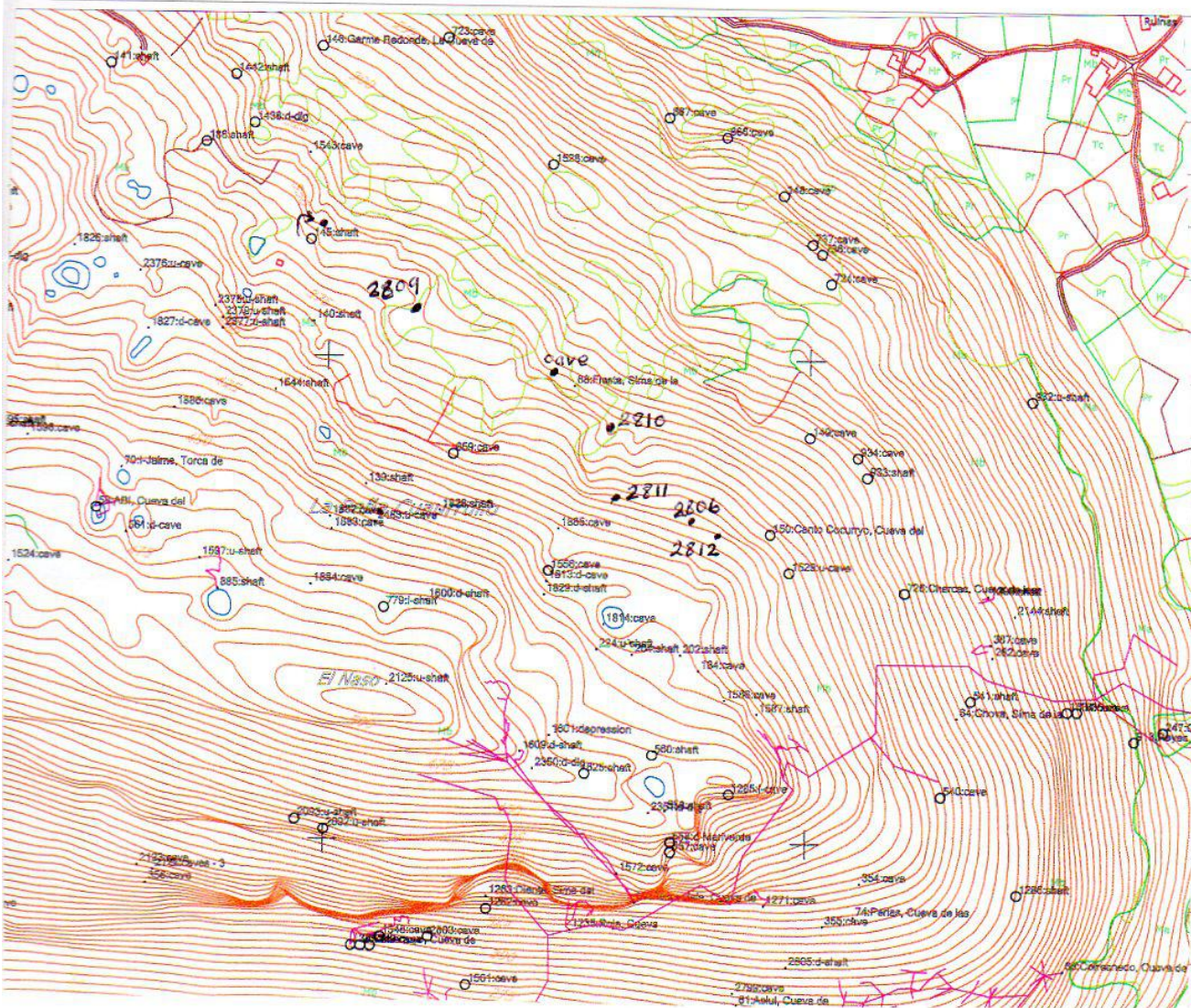
Then whizzed round the hill to Cueva Roja and took some photos – "One of the nicer caves you've taken me to"

On the way back kept to a lower altitude ending up at **Sima Fiesta (site 68)** area where we took a couple of photos of the shaft complex and the cave behind the ruin. Climbed back up to the track via the fenced shaft, **site 145** (photo).

1556

2809	30T 0451593 4797057	355m
2810	30T 0451784 4796921	360m
2811	30T 0451796 4796861	383m
2812	30T 0451899 4796821	390m
0068 cave isst	30T 0451731 4796987	345m
0145	30T 0451493 4797140	347m

Also photo of 1271 entrance
and 77 entrance



Thursday 10th January

Juan & Penny west from Cruz Ozano to follow the southern boundary purple line on the GPS up to Piluca. Mainly successful, but purple line crosses some awkward terrain and we left the line after 1.4km to follow the main red/white route to the summit, past Torca Kunka.

Found new holes just over a kilometre west of Cruz Ozano, on the purple line. Two deep depressions are separated by a short ridge of limestone. The GPS in the middle of this ridge is 30T 0453330 4794295 altitude 452m.

Site 2813 (guessed at 30T 0453313 4794283 alt 444m - but needs a better GPS) is top of the shaft in the southern depression. This is a 6 - 7m narrow pitch at the W end which appears to be undescended. Stones continue rolling at the base and there is an echo.

The northern depression is larger and deeper and has not been investigated or numbered. There may be holes around the sides and a ladder or handline may be required to descend to the base.



MATIENZO CAVES PROJECT