

LOGBOOK

Year: 2008

Season: February

Logbook pages scanned to jpg then combined into a pdf file using <http://smallpdf.com/>

Juan Corrin, January 2015

FEBRUARY

①

Thursday, 21st February 2008

Steve, Juan & Penny walked up La Colina to the south of the Ramera resurgence. Managed to miss most of the caves by climbing up about 120m from the valley base to above the grey limestone level. Came down a bit and eventually found a small 4m long cave with continuing low passage at the position of **site 1026**, although the description is more like **1027**.

Dropped down to have a look in **Cueva Mantaquilla (site 90)**. Tall entrance chamber with a central decaying stal boss and possible archaeological deposits continues up a small climb and down into a decorated chamber where a tight, apparently unexplored route sets off at the back.

Friday, 22nd February 2008

Steve, Juan return to **Cueva Mantaquilla (site 90)**. Down to the right are numerous bones including a possible ibex skull with horns, well calcified. Civil War bullets also recovered and rusty tins noticed. Lots of apparently modern, glazed pottery was also removed.

The lead at the end of the cave is just too tight - needs lump hammer, chisel etc to knock off a couple of inches of calcite. Passage drops 3 or 4m below and ahead opens up with good echo. It is possible to see along about 8m.

Then visited **Cuevona (site 85)**.

Saturday, 23rd February 2008

Juan and Penny followed in the footsteps of Steve *et al* at Christmas and walked from Cruz Ozana up to the Mullir area. It is easy to park a car at the end of the track heading east at Cruz Uzano rather than park at CU itself. (This would cut about 50 minutes off the round trip and gain 150m of altitude.)

The track, faint and overgrown at times, heads off into the woods at the northern end of the meadow.

Keeping out of the woods down to the left ensures a straightforward route to a **steep wooded depression (that needs looking at)** on the right, and a barbed wire fence beyond. After this, the path emerges on the hillside and ascends to near site 1065. The obvious entrance to site 1977 can be seen to the northwest at about the same altitude along a grassy ledge.

J&P walked up the first obvious valley north and found **site 2814**, an obvious 7m deep rift that needs dropping. This valley needs revisiting with some tackle as there seem to be lots of shakeholes to look at. We then walked up the eastern side of the Portienzo valley and GPSed **site 217**. Then went round the hill and returned along the eastern flank (past the two shafts at **site 1069**, that need descending) to find **site 2815**, a metre wide rift with a slot past some jammed blocks, probably about 10m deep.

Temperature up in the low twenties! A touch of sunburn.

217 30T 0455528 4795824 Alt 696m

2814 30T 0455708 4795342 Alt 624m 630

2815 30T 0455759 4795365 Alt 625m

Then went to photo the cave entrances at the road side, just as the road starts to rise north out of the depression, past Antonio's house. There appear to be three cave entrances and only two numbers on the map. Photos taken of all three and each GPSed - awaiting clarification.

Point 1: Agrees with position of **1292**

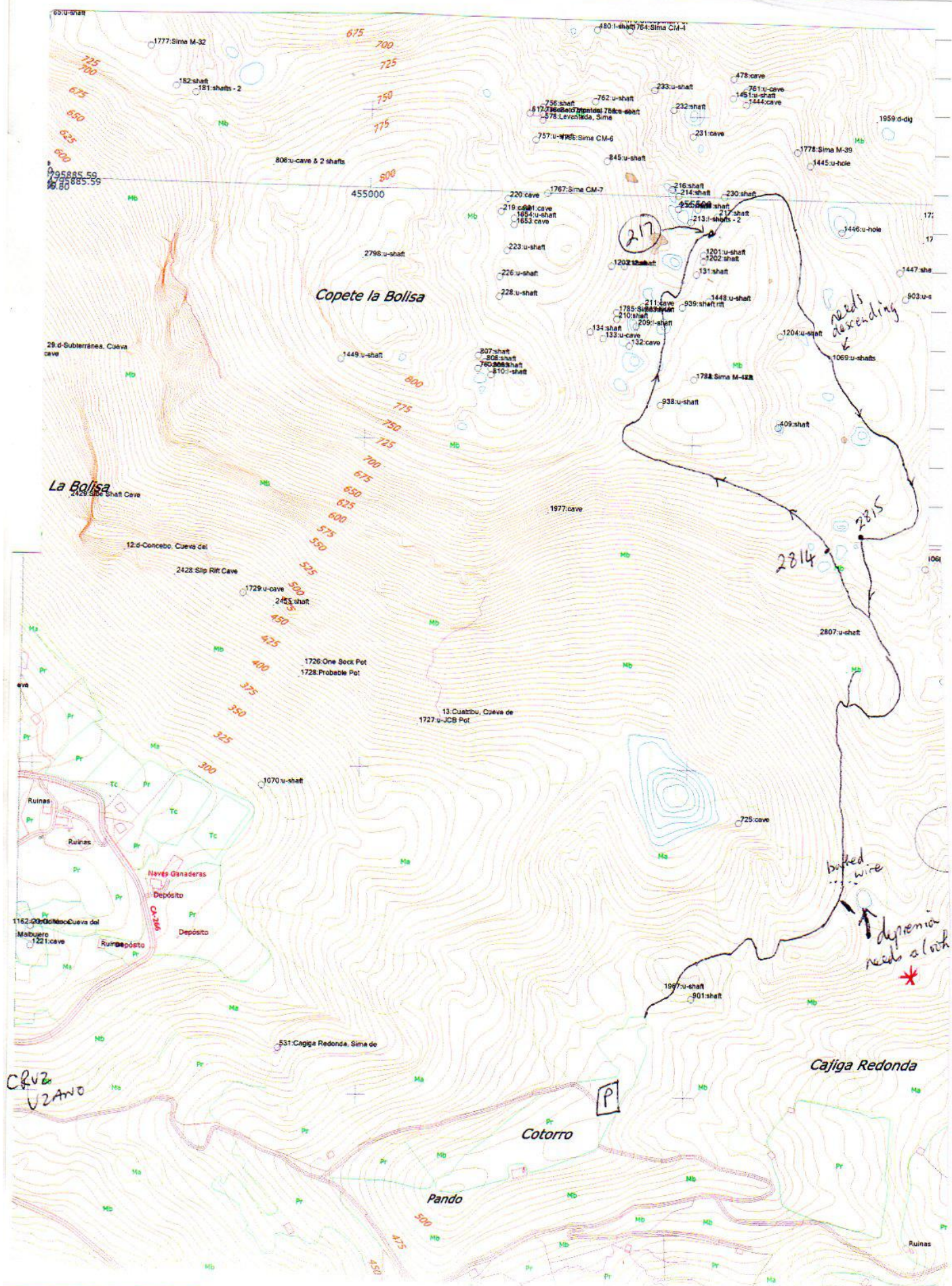
Point 3: Agrees with the apparent position of site **1293** (which seems to be just a blind chamber)

Point 2: Between the other more obvious entrances - a small crawl or slide down. 2818

[Sta 8 on surface survey on site 1289]

MAP





St
sq
sta
en
son
but

Mo
Jua
fire
nee
Lur

28:
28:
208

58
58

* 100

Sunday, 24th February 2008

Steve and Juan into **Mantaquilla (site 90)** to cap the calcite constriction and push through the tight squeeze. Through squeeze with another squeeze up to a hole down where the ladder was hung from a small stal. A 5m drop landed in a well decorated chamber with calcite bosses, etc. After 8m or so the passage ended in a pool and a footprint. Some smaller person has got through in the past – probably Pete Smith! Did some practice photography and brought out more modern pottery, copper-sheathed bullet and a trouser button.

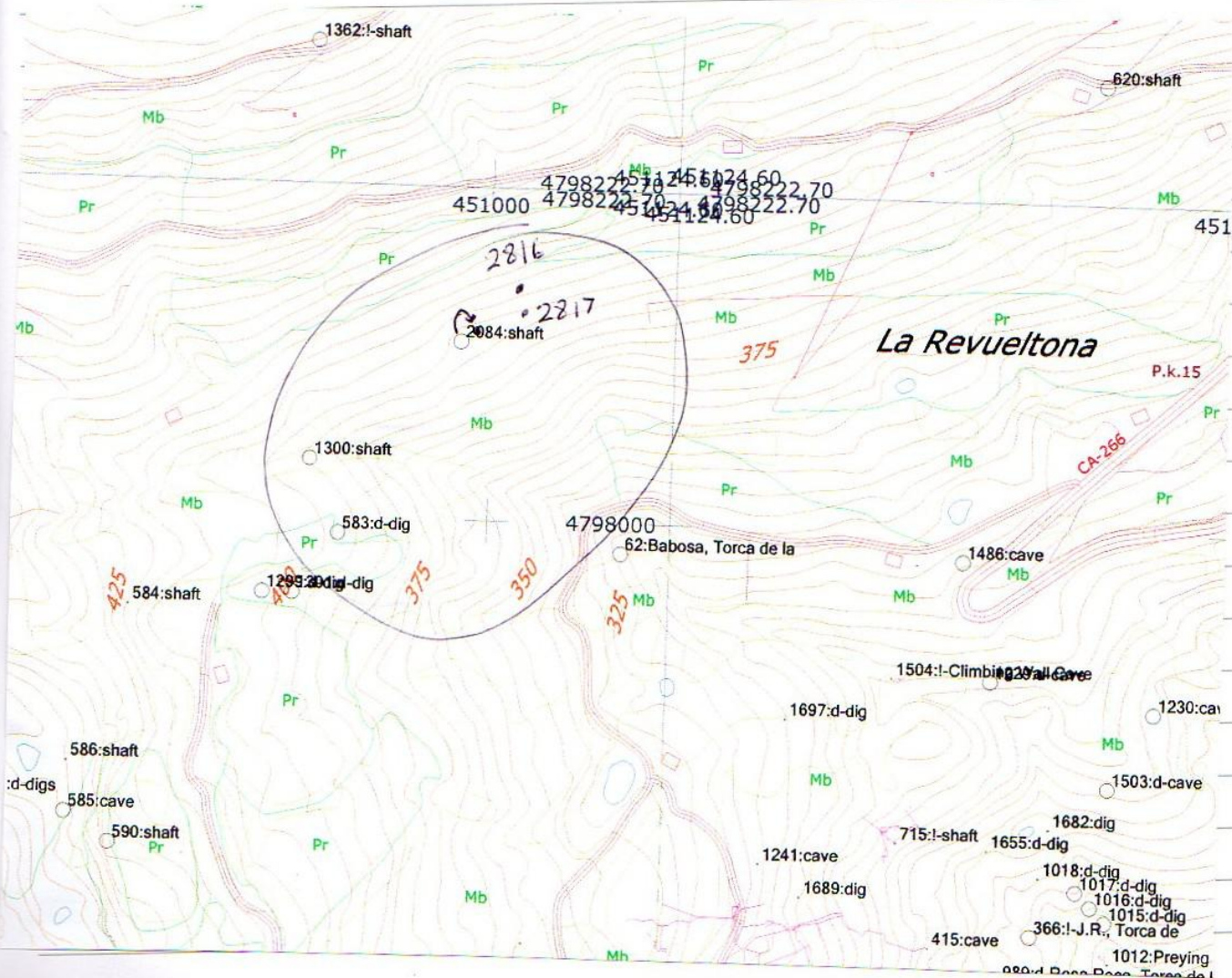
Monday 25th February 2008

Juan & Penny walked up in the 415 corner from the road to Bosmartín towards Cruz Llorada where a recent fire had cleared the prickly stuff. Found two holes of interest – **site 2816**, a 2m wide, 8m deep shaft which needs descending and below, a small opening in a depression onto a possible 4m drop, **site 2817**. Lunch at Pablo's – paella and jabali stew, then plane back to Stansted.

2816 30T 0451020 4798156 Alt 407

2817 30T 0451024 4798137 Alt 398

2084 30T 0450990 4798128 Alt 398



381 Photos from Pete

* looked at 28/3/08 Alex B-J (Cardiac)
Nothing there

MATIENZO CAVES PROJECT