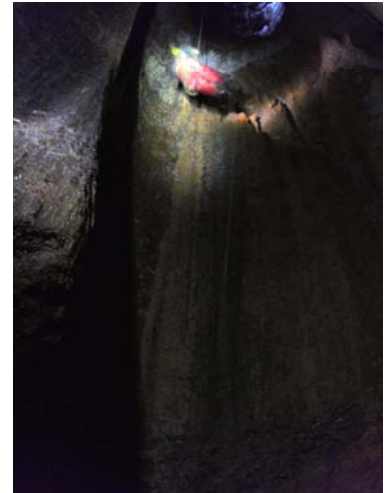
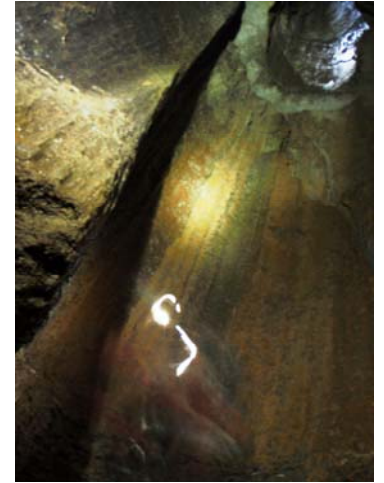


**8 November 2008 – Pedro; Phil P; Juan; Penny and Lea – Torca de Hombre, site 3115.** On fault/joint running 153 deg – depth 57m

After the entrance was found by Lea two weeks ago and Juan/Pedro's visit on Wednesday the plan was to push the torca and survey. Entrance is hard to find but is below a evergreen oak tree that guards to open pot of some 8m across but opens out about 5 m down to a chamber of some 15m across with very old stal. The top beds are in sandstone and it looks as if the cave developed below this bed and the roof collapsed to give the present entrance. Entrance pitch belayed to the Oak tree and one further bolt needed to get to the bottom of the entrance



pitch/chamber. From here the cave drops over two blocks that have “dammed” up the loose rubble to a clean shaft of some

35m to a mud and rock level floor with the small amount of water (from drips) seeping away. No sign of any way on downward. A strong joint/small fault runs through the pot and there is a small passage heading 153deg, may be just possible for a very small person to make some progress along this, but there was no draught and it looked a poor prospect.

PP